

**STANDARD INSTRUMENT ARRIVAL (STAR)
SURGN FOUR ARRIVAL (NON-JET)(RNAV)
ADELAIDE, SA (YPAD)**

28 NOV 2024

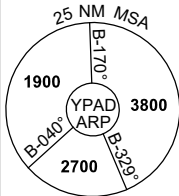
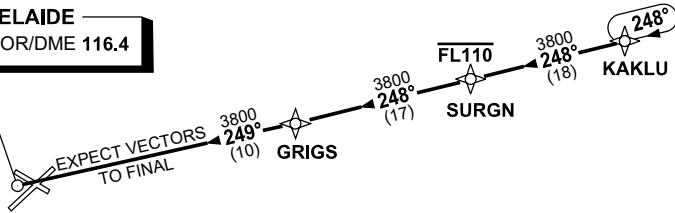
| | | | | |
|---------------------|--------------|--------------|--------------|--|
| ATIS 116.4 134.5 | APP 118.2 | TWR 120.5 | SMC 121.7 | Bearings are Magnetic Elevations in FEET AMSL |
|---------------------|--------------|--------------|--------------|--|

NOT TO SCALE



**SPEED
MAX IAS 250KT
BELOW 10,000ft**

ADELAIDE
AD VOR/DME 116.4



| ATC APCH SPEEDS | |
|-----------------|----------|
| NM FM TD | SPEED KT |
| 20 | AT 230 |
| 10 | 185-160 |
| 5 | 160-150 |

10 NM MSA 3800

TRANSITION:

KAKLU: From KAKLU track 248° to SURGN
Cross SURGN AT or BLW FL110
Then follow ARRIVAL instructions

ARRIVAL: SURGN FOUR

ALL RWYS:

- From SURGN track 248° to GRIGS
- Track 249° to AD VOR
- Expect radar vectors to final approach

**COMMUNICATIONS FAILURE: PROCEDURE IN IMC
IF ABLE CTC AD APP 03-9235-2012**

- Squawk 7600, comply with vertical navigation requirements, but not below MSA.
- Track via the latest STAR clearance to the nominated runway, then fly the most suitable approach in accordance with ERS A EMERG Section 1.5.

Changes: WAYPOINT NAME, VALIDITY INDICATOR.

PADSR17-181