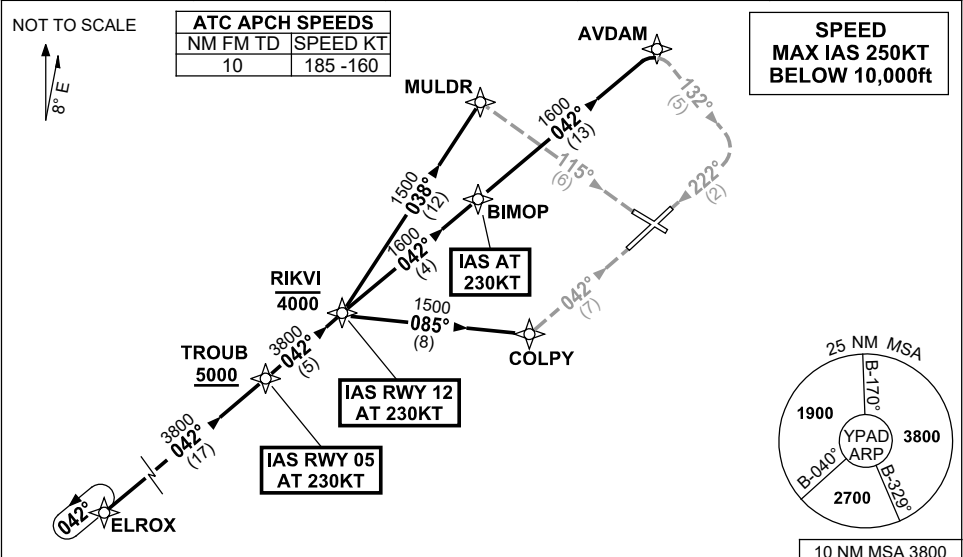


**STANDARD INSTRUMENT ARRIVAL (STAR)  
ELROX FIVE VICTOR ARRIVAL (NON-JET) (RNAV)  
ADELAIDE, SA (YPAD)**

**28 NOV 2024**

ATIS 116.4 134.5	APP 124.2	TWR 120.5	SMC 121.7	Bearings are Magnetic Elevations in FEET AMSL
---------------------	--------------	--------------	--------------	--



**ARRIVAL:** ELROX FIVE  
From ELROX track 042° to TROUB  
**Cross** TROUB AT or ABV 5000ft, then

**RWY 05 VICTOR:** IAS AT 230KT from TROUB  
From TROUB, track 042° to RIKVI  
**Cross** RIKVI AT or BLW 4000ft  
• Turn RIGHT, track 085° to COLPY  
• Turn LEFT, track 042° VISUAL for final RWY 05

**RWY 12 VICTOR:** From TROUB, track 042° to RIKVI  
**Cross** RIKVI AT or BLW 4000ft  
IAS AT 230KT from RIKVI  
• Track 038° to MULDR  
• Turn RIGHT, track 115° VISUAL for final RWY 12

**RWY 23 VICTOR:** From TROUB, track 042° to RIKVI  
**Cross** RIKVI AT or BLW 4000ft  
• Track 042° to BIMOP  
IAS AT 230KT from BIMOP  
• Track 042° to AVDAM  
• Turn RIGHT, track 132° VISUAL to intercept final RWY 23

**NOTE:** When instrument APCH required, expect radar vectors after RIKVI to IAF for appropriate instrument APCH

**COMMUNICATIONS FAILURE: PROCEDURE IN IMC  
IF ABLE CTC AD APP 03-9235-2012**

- Squawk 7600, comply with vertical navigation requirements, but not below MSA.
- Track via the latest STAR clearance to the nominated runway, then fly the most suitable approach in accordance with ERSA EMERG Section 1.5.

Changes: WAYPOINT NAMES, VALIDITY INDICATOR.