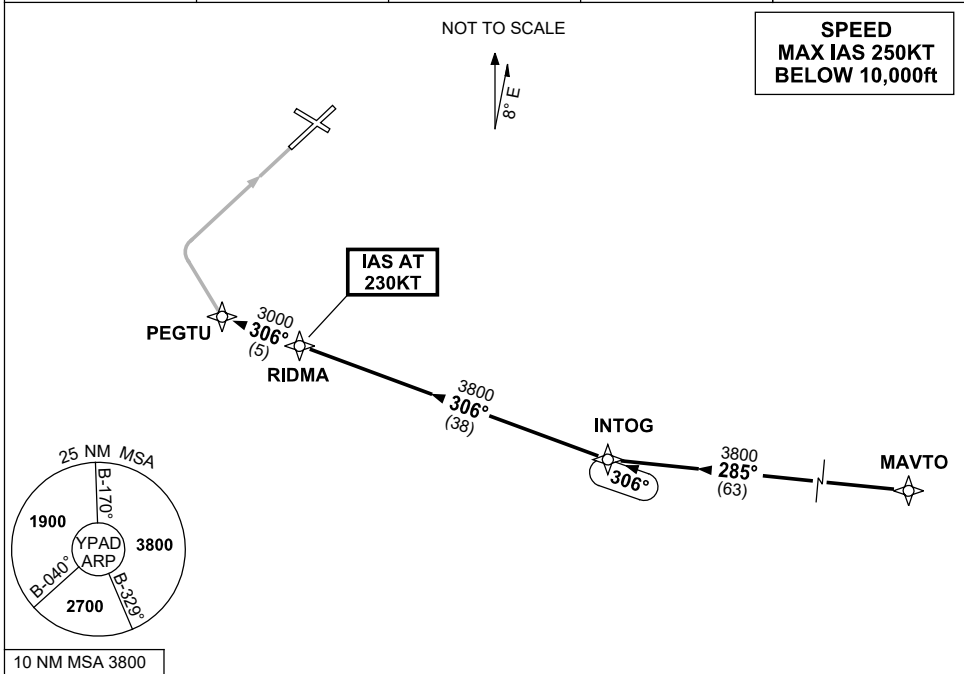


**STANDARD INSTRUMENT ARRIVAL (STAR)
INTOG ONE ZULU ARRIVAL (RNAV)
ADELAIDE, SA (YPAD)**

28 NOV 2024

ATIS 116.4 134.5	APP 118.2	TWR 120.5	SMC 121.7	Bearings are Magnetic Elevations in FEET AMSL
---------------------	--------------	--------------	--------------	--



10 NM MSA 3800

TRANSITION:

MAVTO: From MAVTO track 285° to INTOG
Then follow ARRIVAL instructions

ARRIVAL: INTOG ONE

RWY 05 ZULU:

- From INTOG turn RIGHT, track 306° to RIDMA
IAS AT 230KT from RIDMA
- Track 306° to PEGTU
- Track via RNP Z RWY 05 APCH

**COMMUNICATIONS FAILURE: PROCEDURE IN IMC
IF ABLE CTC AD APP 03-9235-2012**

- Squawk 7600, comply with vertical navigation requirements, but not below MSA.
- Track via the latest STAR clearance to the nominated runway, then fly the most suitable approach in accordance with ERS A EMERG Section 1.5.