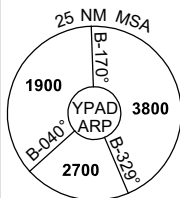
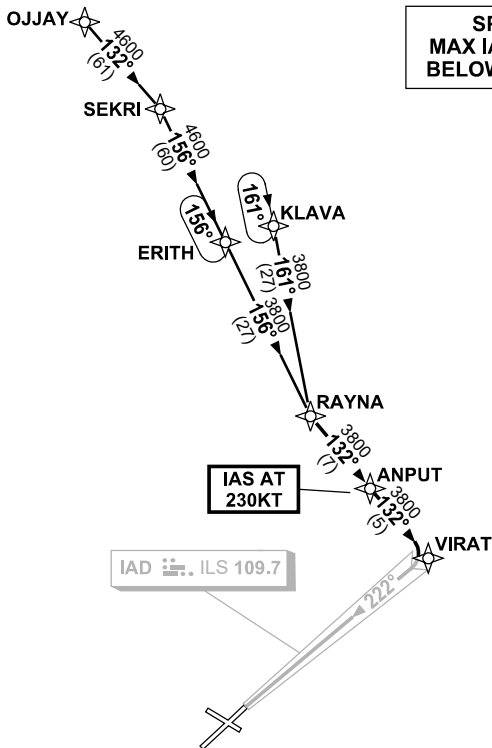


**STANDARD INSTRUMENT ARRIVAL (STAR)
RAYNA THREE ALPHA, ZULU ARRIVALS (RNAV)
ADELAIDE, SA (YPAD)**

28 NOV 2024

ATIS 116.4 134.5	APP 128.6	TWR 120.5	SMC 121.7	Bearings are Magnetic Elevations in FEET AMSL
---------------------	--------------	--------------	--------------	--

NOT TO SCALE



10 NM MSA 3800

TRANSITIONS:

OJJAY: From OJJAY to RAYNA
Track 132° to SEKRI
Turn RIGHT, track 156° to ERITH
Track 156° RAYNA
Then follow ARRIVAL instructions

KLAVA: From KLAVA to RAYNA
Track 161° to RAYNA
Then follow ARRIVAL instructions

ARRIVAL: RAYNA THREE

RWY 23 ALPHA:

- From RAYNA track 132° to ANPUT
- IAS AT 230KT from ANPUT
- Track 132° to VIRAT
- Turn RIGHT, intercept LOC RWY 23

RWY 23 ZULU:

- From RAYNA track 132° to ANPUT
- IAS AT 230KT from ANPUT
- Track 132° to VIRAT
- Track via RNP RWY 23

**COMMUNICATIONS FAILURE: PROCEDURE IN IMC
IF ABLE CTC AD APP 03-9235-2012**

- Squawk 7600, comply with vertical navigation requirements, but not below MSA.
- Track via the latest STAR clearance to the nominated runway, then fly the most suitable approach in accordance with ERSA EMERG Section 1.5.

Changes: WAYPOINT NAMES, VALIDTY INDICATOR.

PADSR11-181