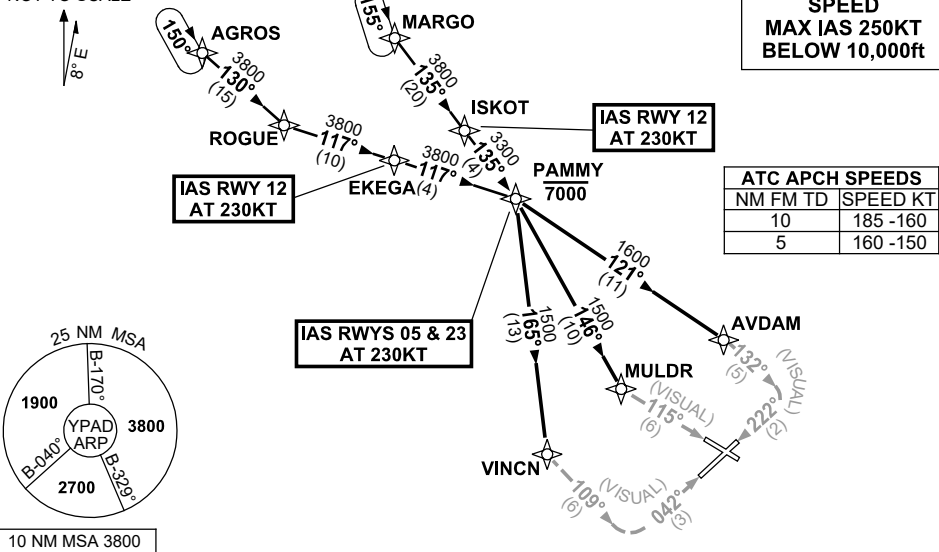


**STANDARD INSTRUMENT ARRIVAL (STAR)  
PAMMY SEVEN VICTOR ARRIVAL (NON-JET) (RNAV)  
ADELAIDE, SA (YPAD)**

28 NOV 2024

ATIS 116.4 134.5	APP 124.2	TWR 120.5	SMC 121.7	Bearings are Magnetic Elevations in FEET AMSL
---------------------	--------------	--------------	--------------	--

NOT TO SCALE



**TRANSITIONS:**

**MARGO:** From MARGO to PAMMY  
Track 135° to ISKOT  
RWY 12 ONLY: IAS AT 230KT from ISKOT  
Track 135° to PAMMY  
**Cross** PAMMY AT or BLW 7000ft  
Then follow ARRIVAL instructions

**AGROS:** From AGROS to PAMMY  
Track 130° to ROGUE  
Turn LEFT, track 117° to EKEGA  
RWY 12 ONLY: IAS AT 230KT from EKEGA  
Track 117° to PAMMY  
**Cross** PAMMY AT or BLW 7000ft  
Then follow ARRIVAL instructions

**ARRIVAL: PAMMY SEVEN**

**RWY 05 VICTOR:** IAS AT 230KT from PAMMY  
From PAMMY track 165° to VINCEN  
• Turn LEFT, track 109° VISUAL to intercept final RWY 05

**RWY 12 VICTOR:** From PAMMY track 146° to MULDR  
• Turn LEFT, track 115° VISUAL for final RWY 12

**RWY 23 VICTOR:** IAS AT 230KT from PAMMY  
From PAMMY track 121° to AVDAM  
• Turn RIGHT, track 132° VISUAL to intercept final RWY 23

**NOTE:** When instrument APCH required, expect radar vectors after PAMMY to IAF for appropriate instrument APCH

**COMMUNICATIONS FAILURE: PROCEDURE IN IMC  
IF ABLE CTC AD APP 03-9235-2012**

- Squawk 7600, comply with vertical navigation requirements, but not below MSA.
- Track via the latest STAR clearance to the nominated runway, then fly the most suitable approach in accordance with ERSA EMERG Section 1.5.

Changes: WAYPOINT NAME, VALIDITY INDICATOR.

PADSR08-181