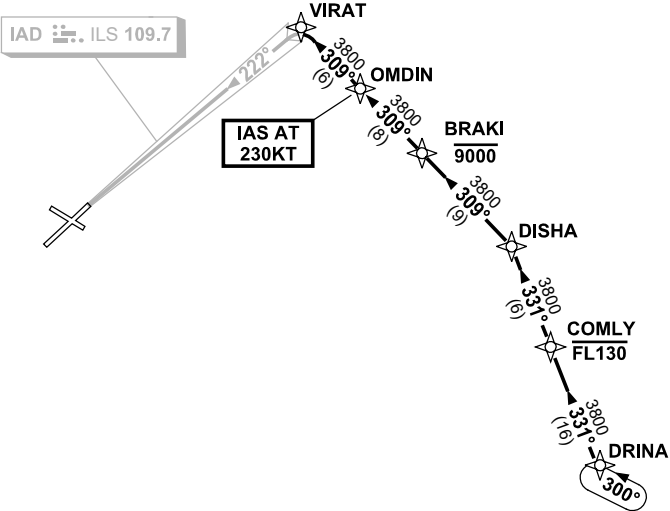


**STANDARD INSTRUMENT ARRIVAL (STAR)
DRINA ONE ALPHA, ZULU ARRIVALS (RNAV)
ADELAIDE, SA (YPAD)**

28 NOV 2024

ATIS 116.4 134.5	APP 118.2	TWR 120.5	SMC 121.7	Bearings are Magnetic Elevations in FEET AMSL
---------------------	--------------	--------------	--------------	--

NOT TO SCALE



**SPEED
MAX IAS 250KT
BELOW 10,000ft**

10 NM MSA 3800

ARRIVAL: DRINA ONE

RWY 23 ALPHA:

- From DRINA track 331° to COMLY
Cross COMLY AT or BLW FL130
- Track 331° to DISHA
- Turn LEFT, track 309° to BRAKI
Cross BRAKI AT or BLW 9000ft
- Track 309° to OMDIN
IAS AT 230KT from OMDIN
- Track 309° to VIRAT
- Turn LEFT, intercept LOC RWY 23

RWY 23 ZULU:

- From DRINA track 331° to COMLY
Cross COMLY AT or BLW FL130
- Track 331° to DISHA
- Turn LEFT, track 309° to BRAKI
Cross BRAKI AT or BLW 9000ft
- Track 309° to OMDIN
IAS AT 230KT from OMDIN
- Track 309° to VIRAT
- Track via RNP RWY 23

**COMMUNICATIONS FAILURE: PROCEDURE IN IMC
IF ABLE CTC AD APP 03-9235-2012**

- Squawk 7600, comply with vertical navigation requirements, but not below MSA.
- Track via the latest STAR clearance to the nominated runway, then fly the most suitable approach in accordance with ERSA EMERG Section 1.5.

Changes: WAYPOINT NAME, VALIDITY INDICATOR.

PADSR03-181