

**STANDARD INSTRUMENT ARRIVAL (STAR)
KAKLU ONE ALPHA, ZULU ARRIVALS (RNAV)
ADELAIDE, SA (YPAD)**

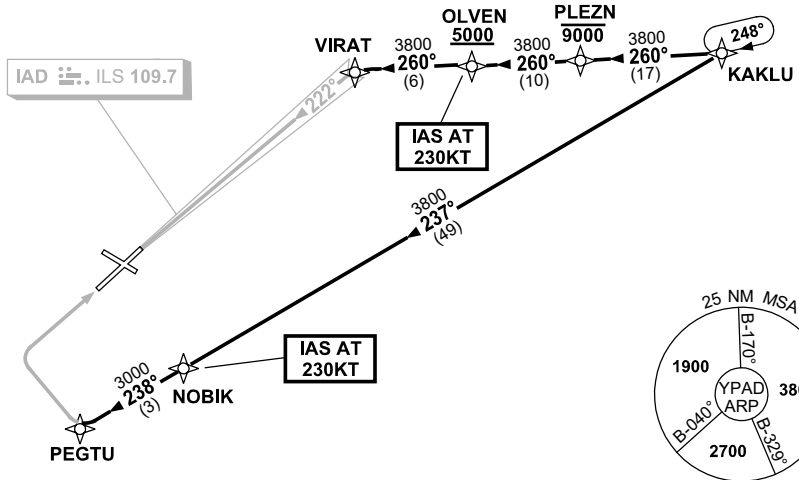
28 NOV 2024

ATIS 116.4 134.5	APP (SE) 118.2	TWR 120.5	Bearings are Magnetic Elevations in FEET AMSL
---------------------	-------------------	--------------	--

NOT TO SCALE



**SPEED
MAX IAS 250KT
BELOW 10,000ft**



10 NM MSA 3800

ARRIVAL: KAKLU ONE

RWY 05 ZULU:

- From KAKLU track 237° to NOBIK
IAS AT 230KT from NOBIK
- Track 238° to PEGTU
- Track via RNP Z RWY 05

RWY 23 ALPHA:

- From KAKLU track 260° to PLEZN
Cross PLEZN AT or BLW 9000ft
- Track 260° to OLVEN
Cross OLVEN AT or ABV 5000ft
IAS AT 230KT from OLVEN
- Track 260° to VIRAT
- Turn LEFT, intercept LOC RWY 23

RWY 23 ZULU:

- From KAKLU track 260° to PLEZN
Cross PLEZN AT or BLW 9000ft
- Track 260° to OLVEN
Cross OLVEN AT or ABV 5000ft
IAS AT 230KT from OLVEN
- Track 260° to VIRAT
- Track via RNP RWY 23

**COMMUNICATIONS FAILURE: PROCEDURE IN IMC
IF ABLE CTC AD APP 03-9235-2012**

- Squawk 7600, comply with vertical navigation requirements, but not below MSA.
- Track via the latest STAR clearance to the nominated runway, then fly the most suitable approach in accordance with ERSA EMERG Section 1.5.

Changes: WAYPOINT NAMES, PROC IDENT.

PADSR02-181