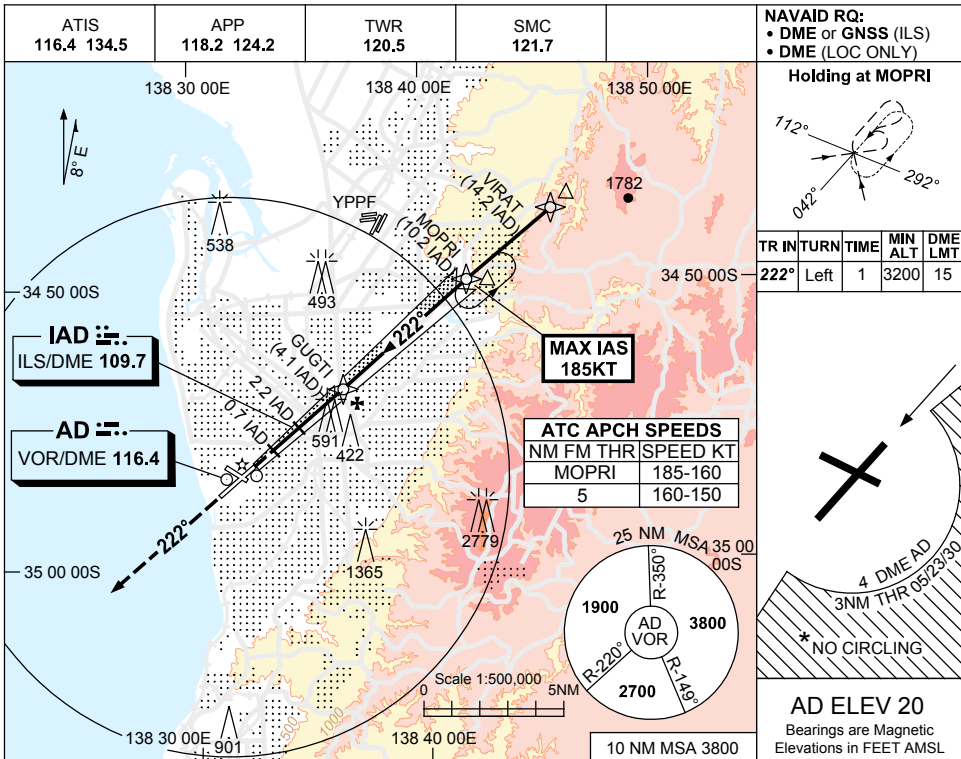


USE QNH

ILS-Z or LOC-Z RWY 23  
ADELAIDE, SA (YPAD)

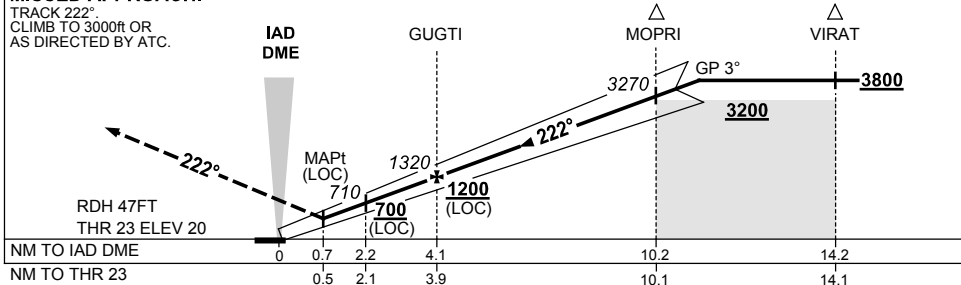
28 NOV 2024



NM TO IAD DME	1.6	2.2	3	4.1	5	6	7	8	9	10	10.2	11	11.9
ALT (3° APCH PATH)	520	710	970	1320	1600	1920	2240	2560	2880	3200	3270	3510	3800

**MISSED APPROACH:**

TRACK 222°.  
CLIMB TO 3000ft OR  
AS DIRECTED BY ATC.



**NOTES**

1. MAX IAS:  
MOPRI : 185KT.
- \*2. NO CIRCLING S OF  
RWY 05 / 23 BEYOND  
4 DME AD OR BEYOND  
3NM FM THR 05/23/30.
- \*3. SPECIAL ALTN MNM  
850/4.0KM.
4. COLOUR: SEE  
SPEC NOTICES.

CATEGORY	A	B	C	D
S-I ILS		270 (250) 0.8		
S-I LOC		520 (500-2.0)		
CIRCLING*	900 (880-2.4)		1000 (980-4.0)	1000 (980-5.0)
ALTERNATE**	(1380-4.4)		(1480-6.0)	(1480-7.0)

Changes: WAYPOINT NAMES, Editorial.

PADI02-181