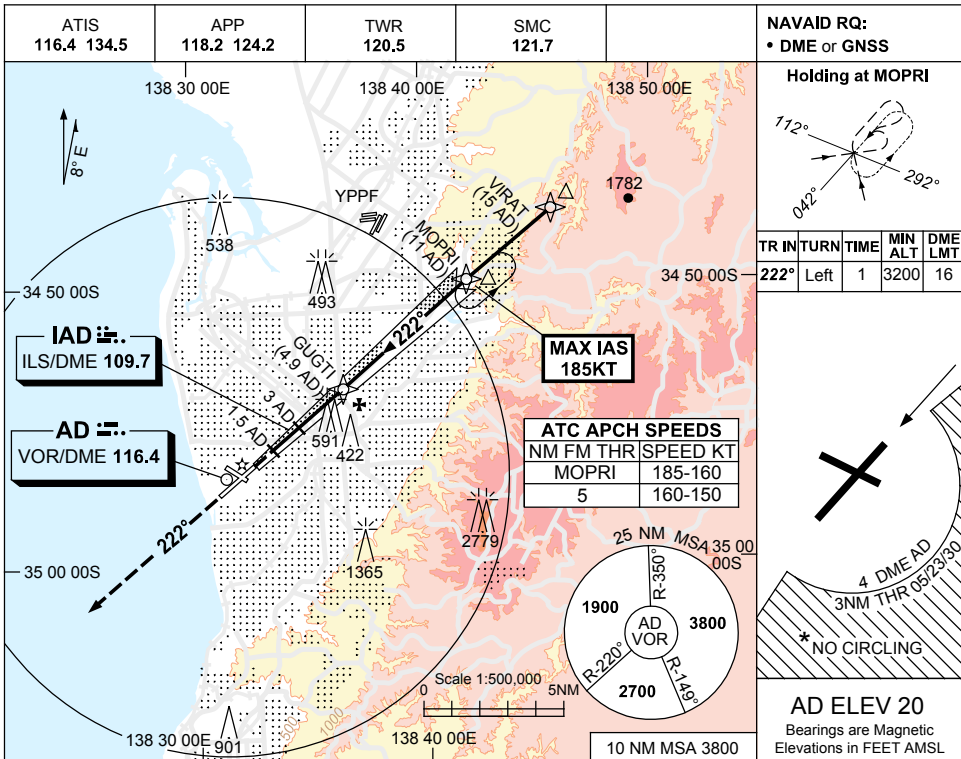


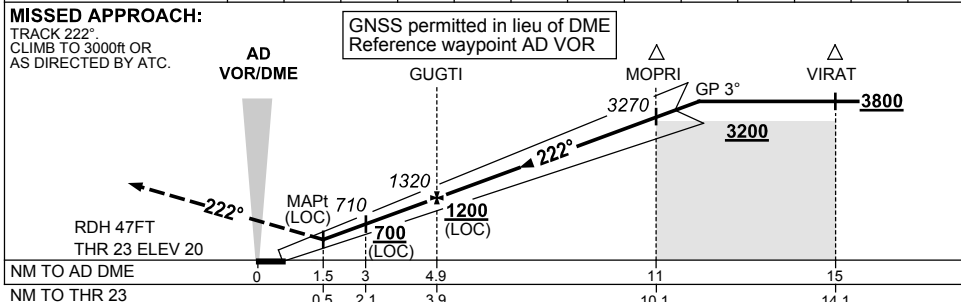
USE QNH

ILS-Y or LOC-Y RWY 23  
**ADELAIDE, SA (YPAD)**

28 NOV 2024



NM TO AD DME	2.4	3	4	4.9	6	7	8	9	10	10.8	11	12	12.7
ALT (3° APCH PATH)	520	710	1030	1320	1670	1990	2310	2630	2940	3200	3270	3580	3800



- NOTES**
- MAX IAS: MOPRI : 185KT.
  - NO CIRCLING S OF RWY 05 / 23 BEYOND 4 DME AD OR BEYOND 3NM FM THR 05/23/30.
  - SPECIAL ALTN MNM 850/4.0KM.
  - COLOUR: SEE SPEC NOTICES.

CATEGORY	A	B	C	D
S-I ILS		270 (250) 0.8		
S-I LOC		520 (500-2.0)		
CIRCLING*	900 (880-2.4)	1000 (980-4.0)	1000 (980-5.0)	
ALTERNATE*	(1380-4.4)	(1480-6.0)	(1480-7.0)	

Changes: WAYPOINT NAMES, Editorial.

PADI01-181