

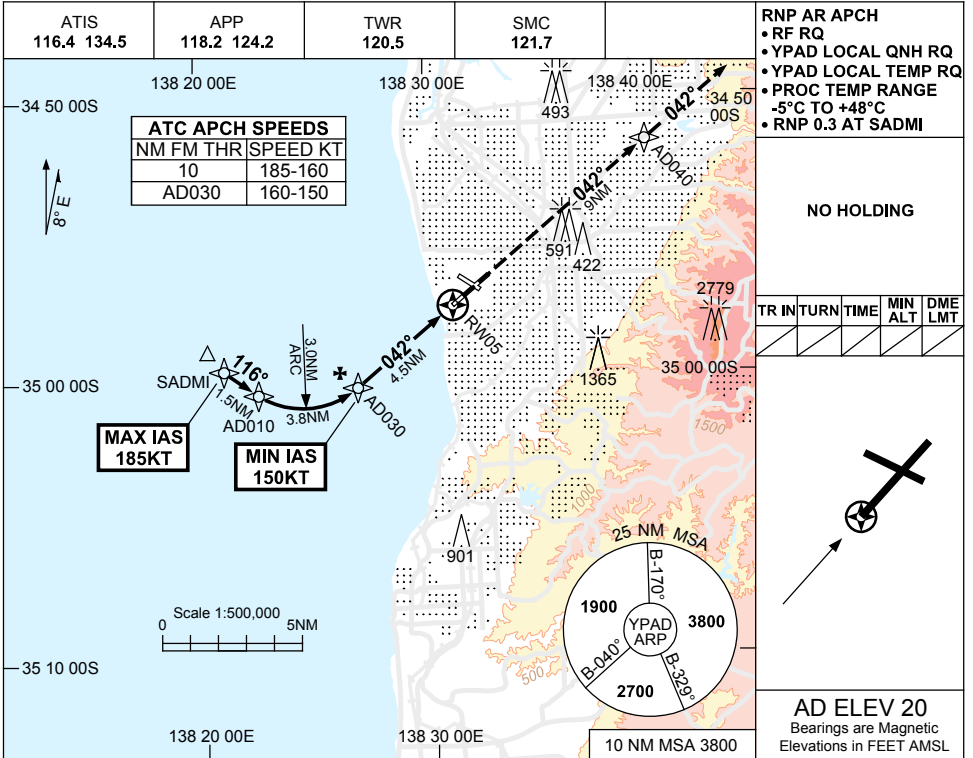
# FOR CASA APPROVED OPERATORS ONLY

USE QNH

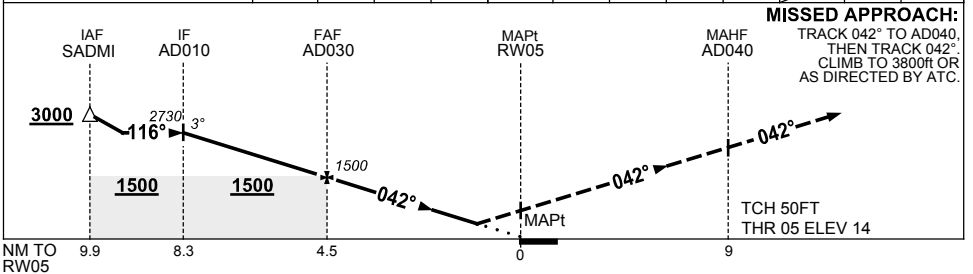
RNP W RWY 05 (AR)

**ADELAIDE, SA (YPAD)**

28 NOV 2024



NM TO NEXT WPT	AD010	3	2	1	AD030	4	3	2	0.9	RW05		
ALT (3° APCH PATH)	2730	2450	2140	1820	1500	1340	1020	700	360			



## NOTES

- MAX IAS: SADMI : 185KT.
- COLOUR: SEE SPEC NOTICES.

CATEGORY	A	B	C	D
RNP (0.3)	360 (346-1.9)			
CIRCLING	NOT AUTHORISED			
ALTERNATE	(1380-4.4)		(1480-6.0) (1480-7.0)	

Changes: WAYPOINT NAMES, Editorial.

PADGN17-181