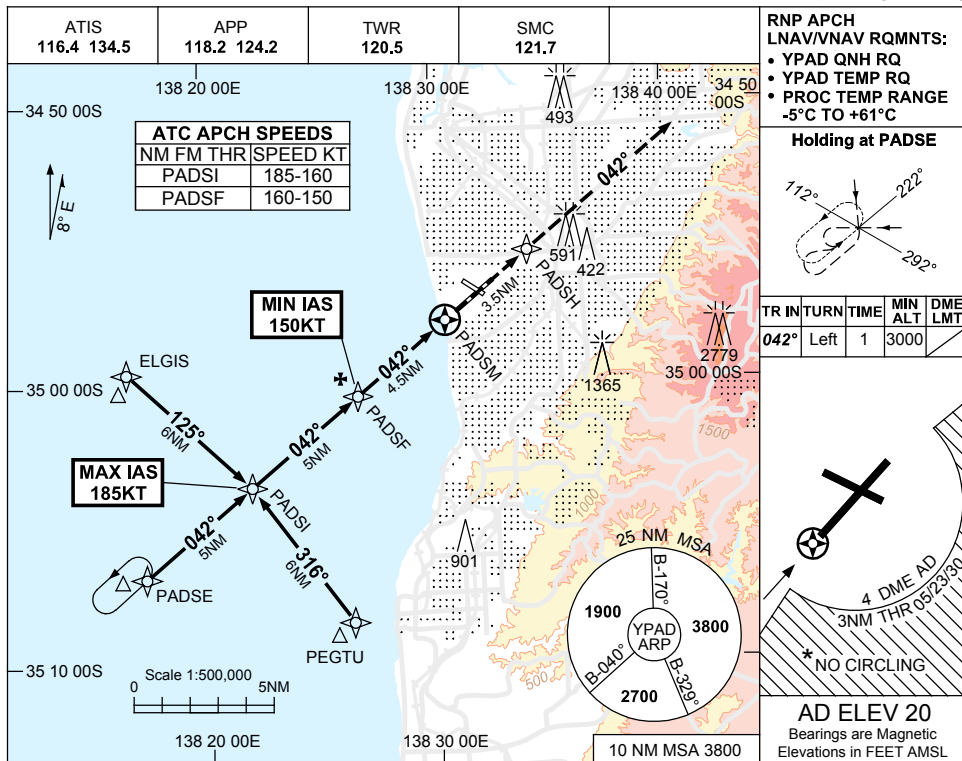


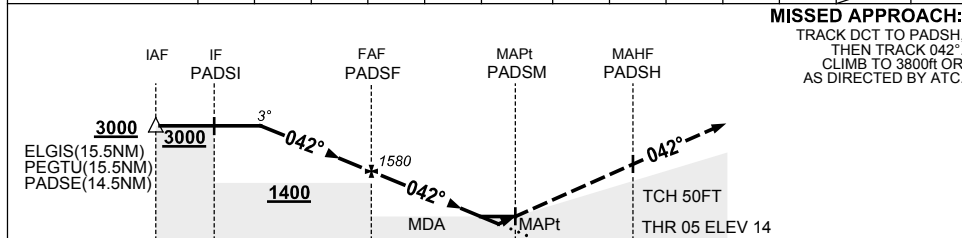
USE QNH

RNP Z RWY 05
ADELAIDE, SA (YPAD)

28 NOV 2024



NM TO NEXT WPT	4.4	4	3	2	1	PADSF	4	3	2	0.9	0.7	PADSM
ALT (3° APCH PATH)	3000	2860	2540	2220	1900	1580	1420	1110	790	450	360	



NOTES

1. MAX IAS:
INITIAL : 230KT.
PADSI : 185KT.
- *2. NO CIRCLING SOUTH OF RWY 05/23 BEYOND 4 DME AD OR BEYOND 3NM FM THR 05/23/30.
3. HLDG MAY NOT BE CONTAINED IN CTA.
4. COLOUR: SEE SPEC NOTICES.

CATEGORY	A	B	C	D
LNAV/VNAV		360 (346-1.9)		
LNAV		450 (430-2.4)		
CIRCLING *	900 (880-2.4)		1000 (980-4.0)	1000 (980-5.0)
ALTERNATE	(1380-4.4)		(1480-6.0)	(1480-7.0)

Changes: WAYPOINT NAMES, Editorial.

PADGN01-181