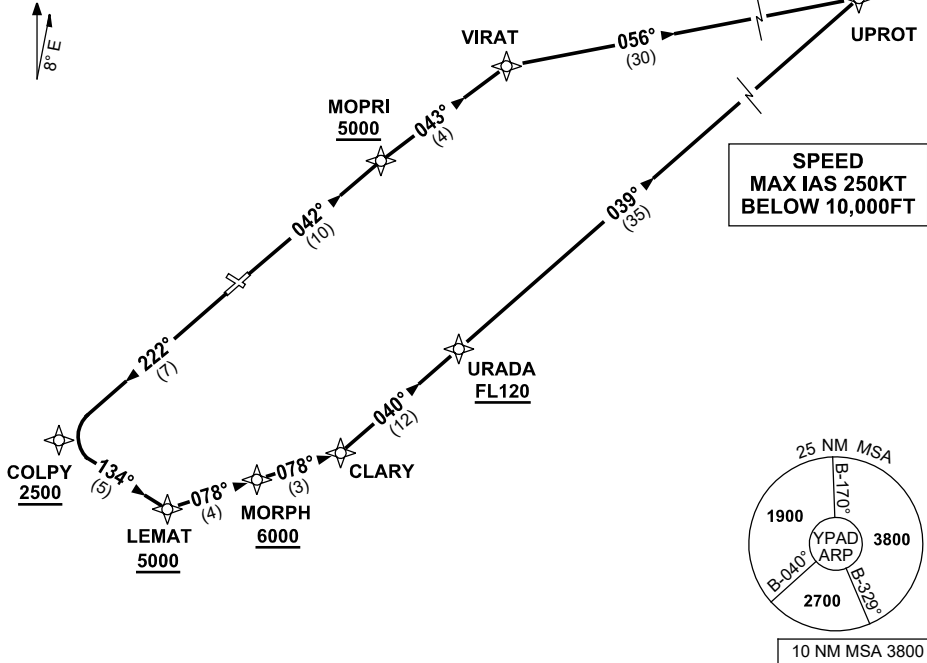


**STANDARD INSTRUMENT DEPARTURES (SID)
UPROT TWO (JET) (RNAV)
ADELAIDE, SA (YPAD)**

28 NOV 2024

ATIS 116.4 134.5	ACD 126.1	SMC 121.7	TWR 120.5	APP 118.2		Bearings are Magnetic Elevations in FEET AMSL
---------------------	--------------	--------------	--------------	--------------	--	--

NOT TO SCALE



UPROT TWO DEPARTURE

RWY 05

- GRAD 4.4% to 900ft then 3.3%
- Track 042° to MOPRI
 Cross MOPRI AT or ABV 5000ft
- Track 043° to VIRAT
- Turn RIGHT track 056° to UPROT,
 then as cleared

RWY 23

- GRAD 4.7% to 3300ft then 3.3%
- Track 222° to COLPY
 Cross COLPY AT or ABV 2500ft
- Turn LEFT track 134° to LEMAT
 Cross LEMAT AT or ABV 5000ft
- Turn LEFT track 078° to MORPH
 Cross MORPH AT or ABV 6000ft
- Track 078° to CLARY,
- Turn LEFT track 040° to URADA,
 Cross URADA AT or ABV FL120
- Track 039° to UPROT,
 then as cleared

Changes: WAYPOINT NAMES, VALIDITY INDICATOR.

PADDP03-181