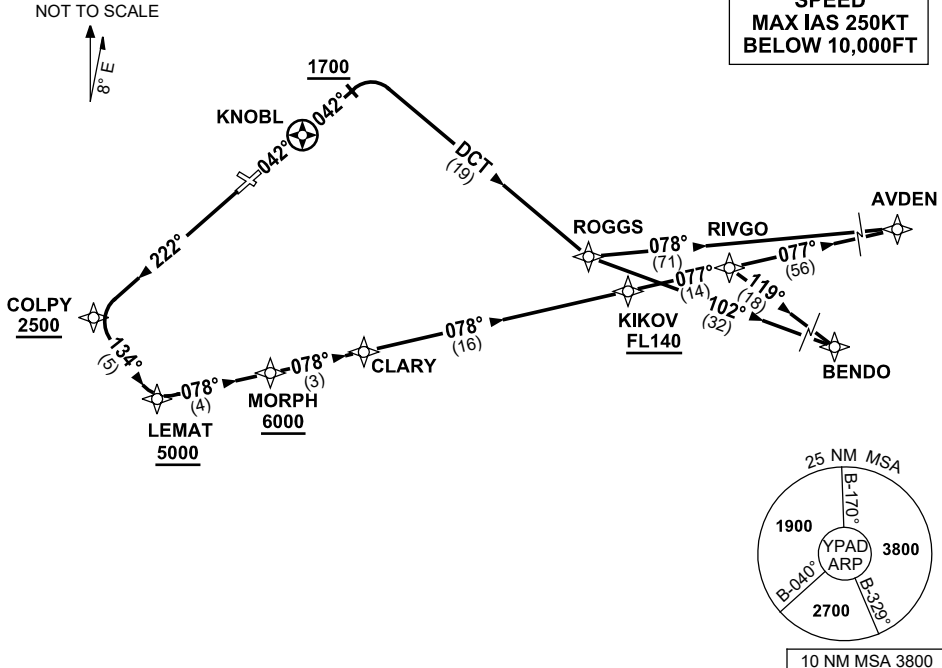


**STANDARD INSTRUMENT DEPARTURES (SID)
RWYS EAST (JET) (RNAV)
ADELAIDE, SA (YPAD)**

13 JUN 2024

ATIS 116.4 134.5	ACD 126.1	SMC 121.7	TWR 120.5	APP 118.2		Bearings are Magnetic Elevations in FEET AMSL
---------------------	--------------	--------------	--------------	--------------	--	--

**SPEED
MAX IAS 250KT
BELOW 10,000FT**



**AVDEN ONE DEPARTURE
BENDO THREE DEPARTURE**

RWY 05

- GRAD 5.7% to 3300ft then 3.3%
- Track 042°
- After passing KNOBL **AND** 1700ft turn **RIGHT**
- Track DCT to ROGGS

For AVDEN

- From ROGGS turn **LEFT** track 078° to AVDEN, then as cleared

For BENDO

- From ROGGS turn as required, track 102° to BENDO, then as cleared

RWY 23

- GRAD 4.7% to 3300ft then 3.3%
- Track 222° to COLPY
- **Cross** COLPY AT or ABV 2500ft
- Turn **LEFT**, track 134° to LEMAT
- **Cross** LEMAT AT or ABV 5000ft
- Turn **LEFT**, track 078° to MORPH
- **Cross** MORPH AT or ABV 6000ft
- Track 078° to CLARY
- Track 078° to KIKOV
- **Cross** KIKOV AT or ABV FL140
- Track 077° to RIVGO

For AVDEN

- From RIVGO track 077° to AVDEN, then as cleared

For BENDO

- From RIVGO turn **RIGHT** track 119° to BENDO, then as cleared

Changes: AVDEN, RIVGO, KIKOV, LEMAT REPLACE PANKI, MURRY, BARKA, SULLY, VALIDITY NUMBER. PADDP02-179