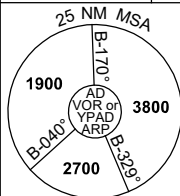


# DME or GNSS ARRIVAL PROCEDURES ADELAIDE, SA (YPAD)

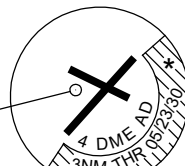
25 MAR 2021

ATIS 116.4 134.5	APP 118.2 124.2	TWR 120.5	SMC 121.7		Bearings are Magnetic Elevations in FEET AMSL
---------------------	--------------------	--------------	--------------	--	--



## DME USING AD DME REFERENCE WAYPOINT AD VOR

**AD**   
VOR/DME 116.4



10 NM MSA 3800

\* NO CIRCLING SOUTH OF RWY 05/23 BEYOND 4 DME OR BEYOND 3NM FM THR 05/23/30

AD ELEV 20

### SECTOR A

**MISSED APPROACH:**  
TURN AS REQUIRED, INTERCEPT AND TRACK R-044°. CLIMB TO 3800FT OR AS DIRECTED BY ATC.

**LIMITATION:**  
200KT IAS MAX UNTIL ESTABLISHED ON R-044°

NM TO AD VOR	25	15	10	5	0														
<b>CIRCLING MINIMA</b>	A,B: 900-2.4			C: 1000-4.0		D: 1000-5.0													
NM TO AD VOR	8.1	8	7	6	5	4	3	2.4											
ALT (3° APCH PATH)	2700	2680	2360	2050	1730	1410	1090	900											

### SECTOR B

**MISSED APPROACH:**  
TURN LEFT, INTERCEPT AND TRACK R-224°, CLIMB TO 1800FT; OR AS DIRECTED BY ATC.

NM TO AD VOR	25	15	10	7	5	3	0												
<b>CIRCLING MINIMA</b>	A,B: 900-2.4			C: 1000-4.0		D: 1000-5.0													
NM TO AD VOR	9.4	9	8	7	6	5	4	3	2	1	0.3								
ALT (3° APCH PATH)	3800	3680	3360	3040	2720	2410	2090	1770	1450	1130	910								

### SECTOR C

**MISSED APPROACH:**  
TURN LEFT, INTERCEPT AND TRACK R-300°, CLIMB TO 1800FT; OR AS DIRECTED BY ATC.

NM TO AD VOR	25	15	8	6	5	4	2	0											
<b>CIRCLING MINIMA</b>	A,B: 900-2.4			C: 1000-4.0		D: 1000-5.0													
NM TO AD VOR	10	9	8	7	6	5	4	3	2	0.9									
ALT (3° APCH PATH)	3800	3480	3160	2840	2520	2210	1890	1570	1250	900									

Changes: Editorial

PADDG01-166