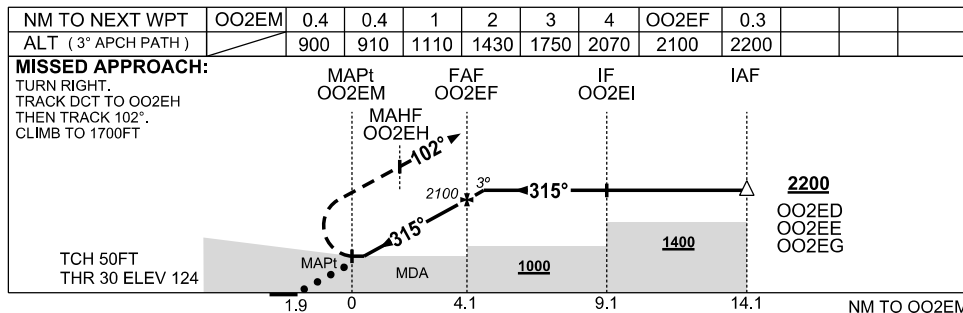
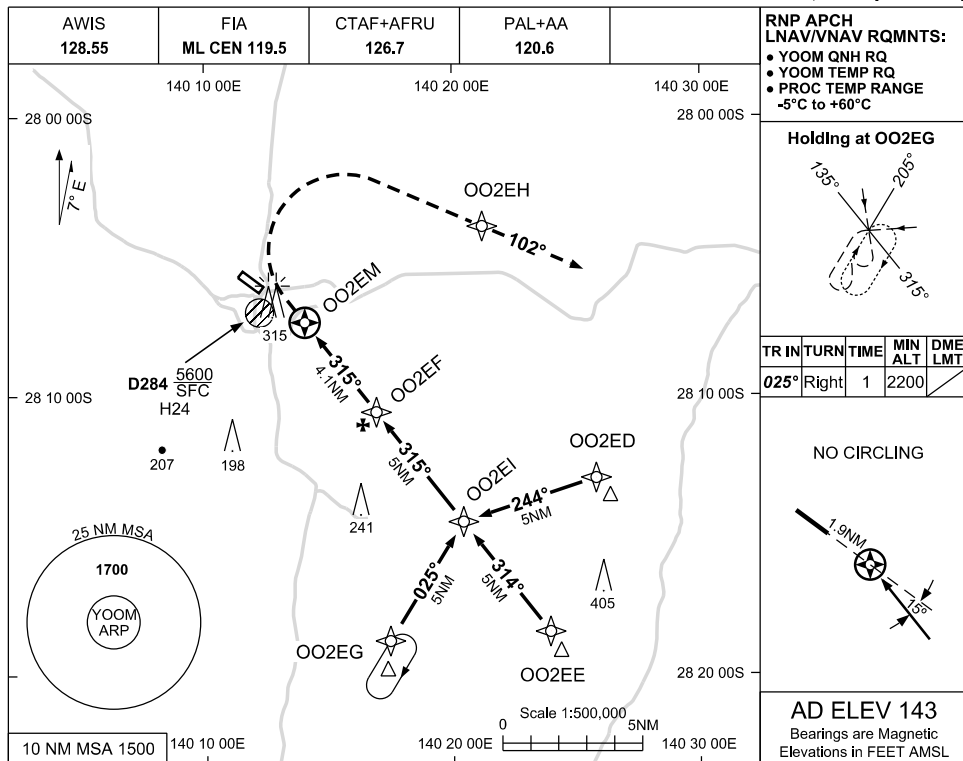


USE QNH

RNP RWY 30  
MOOMBA, SA (YOOM)

30 NOV 2023



**NOTES**

| CATEGORY  | A              | B                    | C              | D                 |
|-----------|----------------|----------------------|----------------|-------------------|
| LNAV/VNAV |                | <b>910 (786-4.5)</b> |                | NOT<br>AUTHORISED |
| LNAV      |                | <b>900 (776-4.4)</b> |                |                   |
| CIRCLING  | NOT AUTHORISED |                      | NOT AUTHORISED |                   |
| ALTERNATE | (1097-4.4)     |                      | (1197-6.0)     |                   |

1. MAX IAS:  
INITIAL : 210KT  
MAP TURN: 210KT

Changes: UNICOM REMOVED, EDITORIAL.

OOMGN02-177