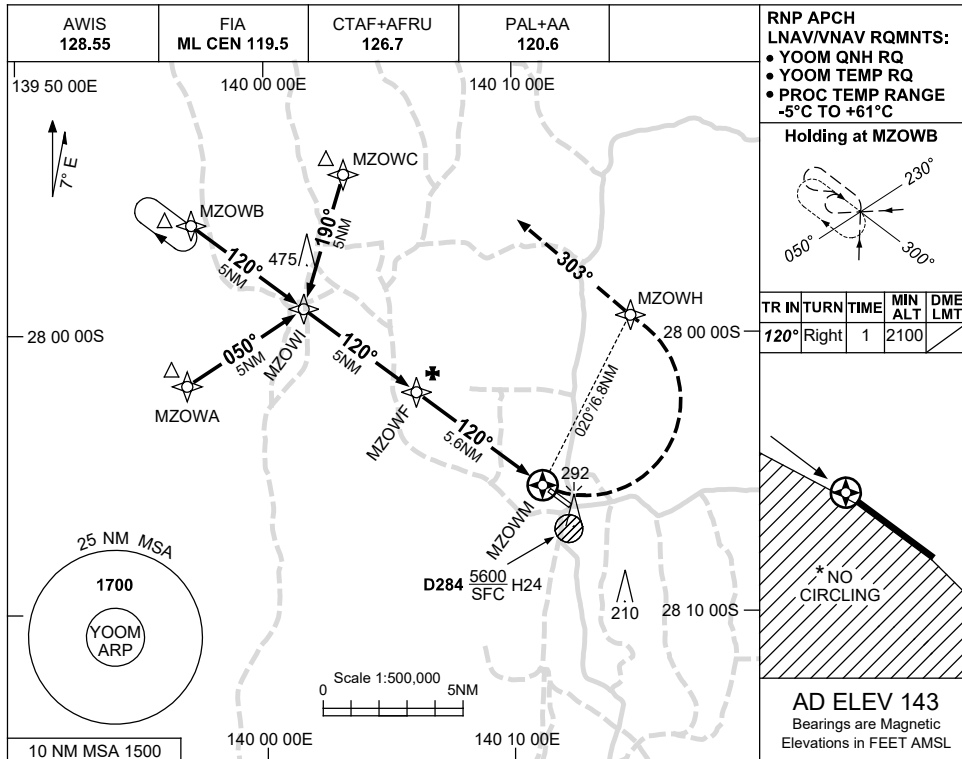


USE QNH

RNP RWY 12  
MOOMBA, SA (YOOM)

30 NOV 2023



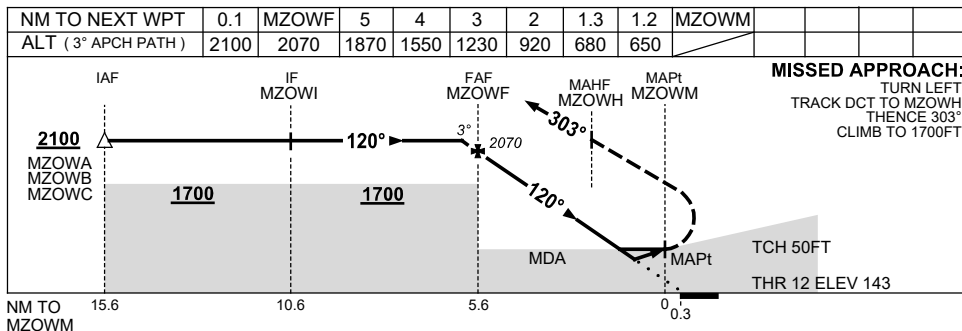
**RNP APCH LNAV/VNAV RQMTS:**

- YOOM QNH RQ
- YOOM TEMP RQ
- PROC TEMP RANGE -5°C TO +61°C

**Holding at MZOWH**

TR	IN	TURN	TIME	MIN ALT	DME LMT
120°	Right		1	2100	

**AD ELEV 143**  
Bearings are Magnetic  
Elevations in FEET AMSL



**NOTES**

CATEGORY	A	B	C	D
LNAV/VNAV		650 (507-2.9)		NOT APPLICABLE
LNAV		680 (537-3.0)		
CIRCLING *	740 (597-2.4)		840 (697-4.0)	
ALTERNATE	(1097-4.4)		(1197-6.0)	

1. MAX IAS: ; 210KT.  
INITIAL MAP TURN: 190KT.
- \* 2. NO CIRCLING S OF RWY 12/30.

Changes: UNICOM REMOVAL, Editorial.

OOMGN01-177