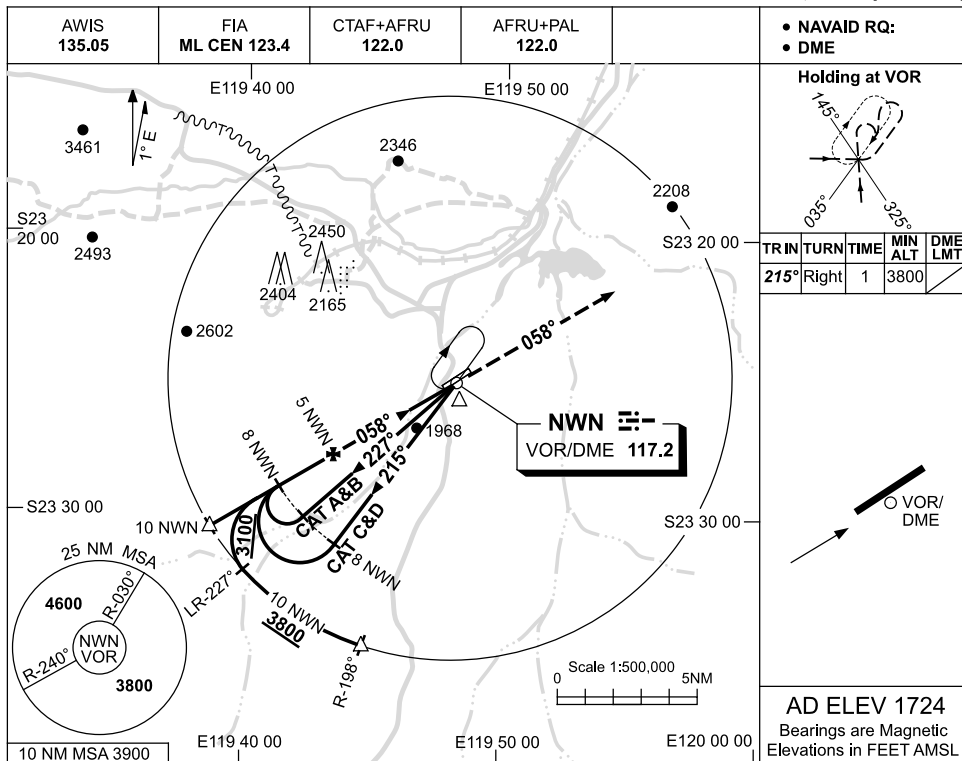


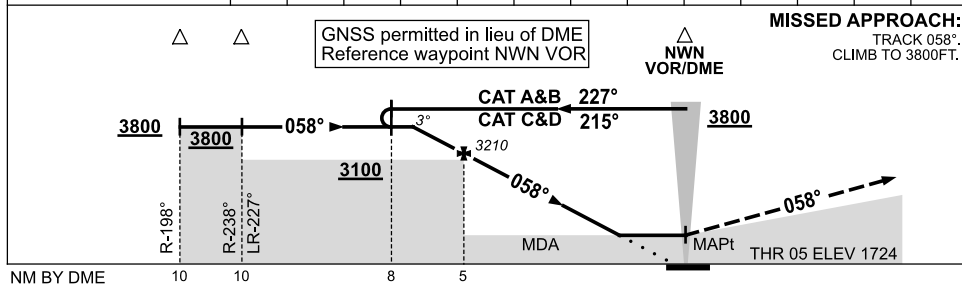
USE QNH

VOR-Z RWY 05
NEWMAN, WA (YNWN)

18 AUG 2016



DIST FM NWN DME	6.9	6	5	4	3	2.5									
ALT (3° APCH PATH)	3800	3530	3210	2890	2570	2410									



CATEGORY	A	B	C	D
S-I VOR/DME	2410 (686-3.9)			
CIRCLING	2500 (776-2.4)	2730 (1006-4.0)	2860 (1136-5.0)	
ALTERNATE	(1276-4.4)	(1506-6.0)	(1636-7.0)	

NOTES
 1. MAX IAS:
 INITIAL : 210KT.

Changes: TIME LIMITS DELETED, Editorial.

NWNVO01-148