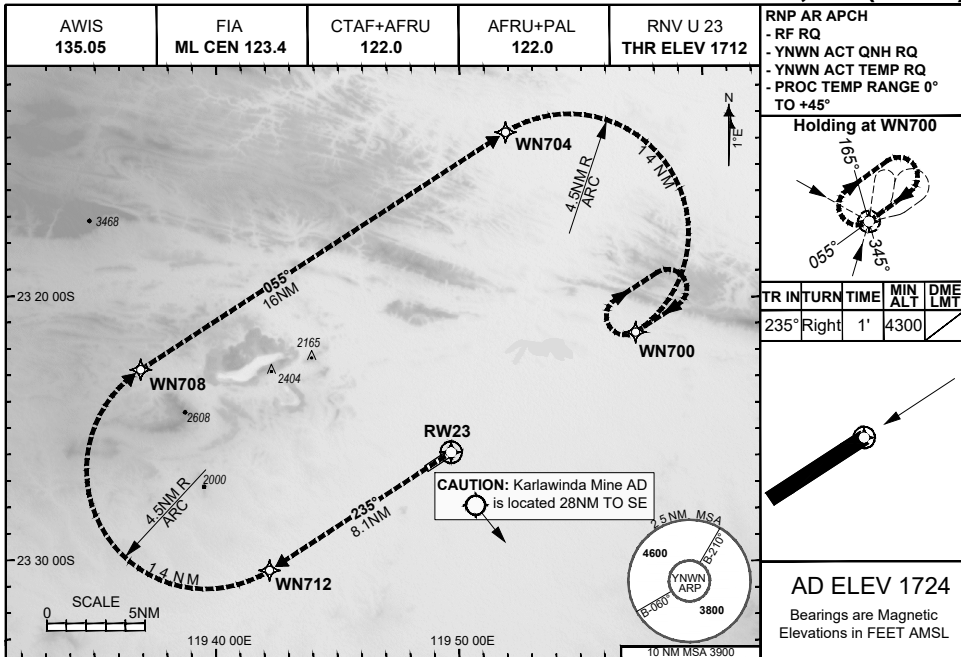


28 NOV 2024

USE QNH

NEWMAN, WA (YNWN)



ENGINE OUT MISSED APPROACH:

Track via the RNP AR Engine Out Missed Approach track to WN700 and hold as published.

Acceleration altitude 2700FT QNH (1000FT AGL).
Climb to 4300FT.

DO NOT USE FOR NAVIGATION

Prepared by GE Aerospace

