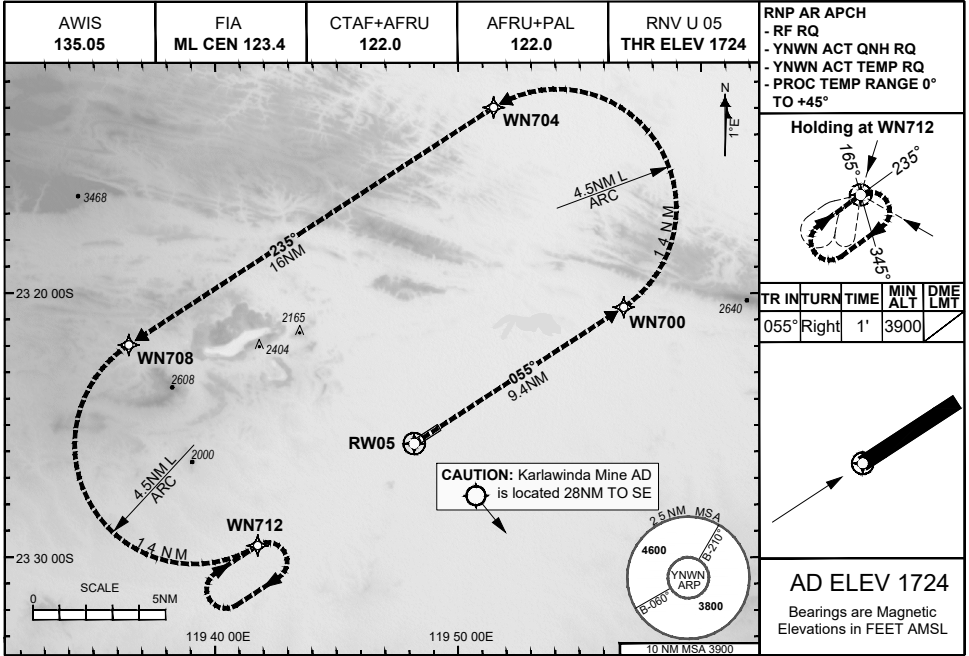


28 NOV 2024

USE QNH

**NEWMAN, WA (YNWN)**



**ENGINE OUT MISSED APPROACH:**

Track via the RNP AR Engine Out Missed Approach track to WN712 and hold as published.

Acceleration altitude 2700FT QNH (1000FT AGL).  
Climb to 3900FT.

**DO NOT USE FOR NAVIGATION**

Prepared by GE Aerospace

