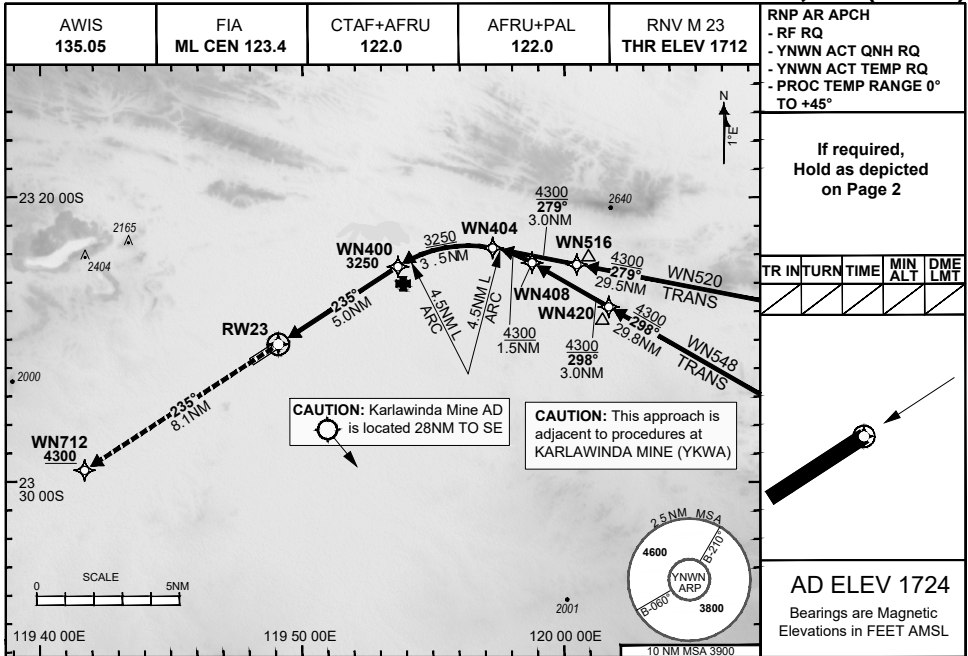


FOR CASA APPROVED OPERATORS ONLY

28 NOV 2024

USE QNH

NEWMAN, WA (YNWN)



DISTANCE FM THR	RWY23	WN400	WN404	WN408	WN516			
ALT (2.80° APCH PATH)	2006	3250	4300	4730	4880			

MISSED APPROACH:
Climb to 4300FT via the RNP AR Missed Approach track to WN712. Acceleration altitude 2700FT QNH.

ENGINE OUT MISSED APPROACH:
SEE Page 2

NM FM THR	8.1	0	5.0	8.5
THR				

NOTES

- 1) Lateral transition to MAP must not be initiated prior to DA(H) PSN.
- 2) PAPI and glidepath not coincident.
- 3) Minimum MAP gradient (All Engines) 4.6% to 4300FT.
- 4) CAUTION: This approach is adjacent to procedures at KARLAWINDA MINE (YKWA).

CATEGORY	A	B	C	D
RNP (0.30)	NOT APPLICABLE		DA(H) 2006' (294)-1.6	
CIRCLING	NOT AUTHORISED			

202407301648 General Electric Company Proprietary & Confidential Information

Changes: Revised frequency box, Editorial.

NWNGN05-181

DO NOT USE FOR NAVIGATION

Prepared by GE Aerospace

