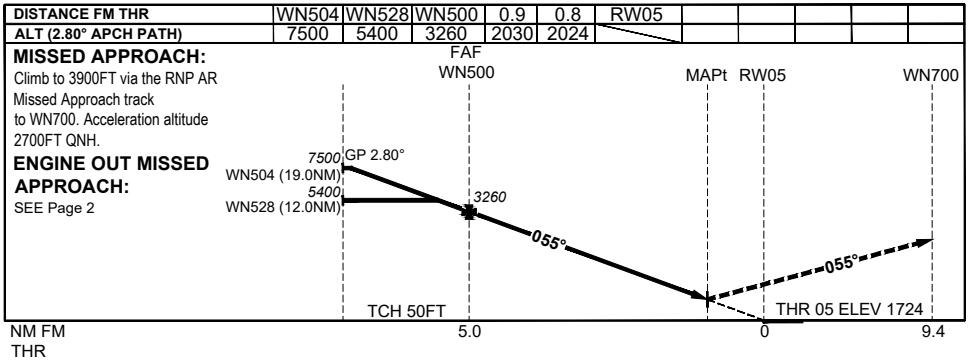
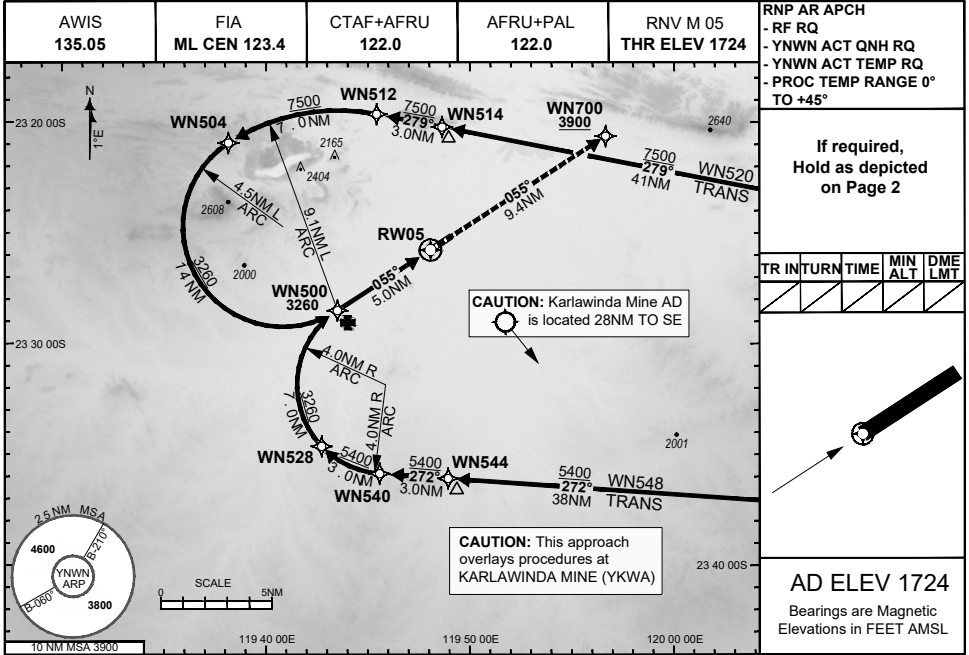


FOR CASA APPROVED OPERATORS ONLY

28 NOV 2024

USE QNH

NEWMAN, WA (YNWN)



NOTES

- 1) Lateral transition to MAP must not be initiated prior to DA(H) PSN.
- 2) PAPI and glidepath not coincident.
- 3) Minimum MAP gradient (All Engines) 3.3% to 3900FT.
- 4) CAUTION: This approach overlays procedures at KARLAWINDA MINE (YKWA).

CATEGORY	A	B	C	D
RNP (0.10)	NOT APPLICABLE		DA(H) 2024' (300)-1.6	
RNP (0.30)	NOT APPLICABLE		DA(H) 2030' (306)-1.6	
CIRCLING	NOT AUTHORISED			

202407301640 General Electric Company Proprietary & Confidential Information

Changes: Revised frequency box, Editorial.

NWNGN03-181

DO NOT USE FOR NAVIGATION

Prepared by GE Aerospace

