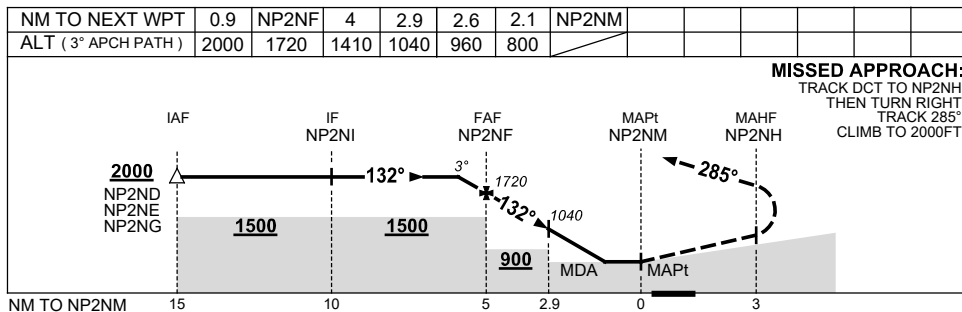
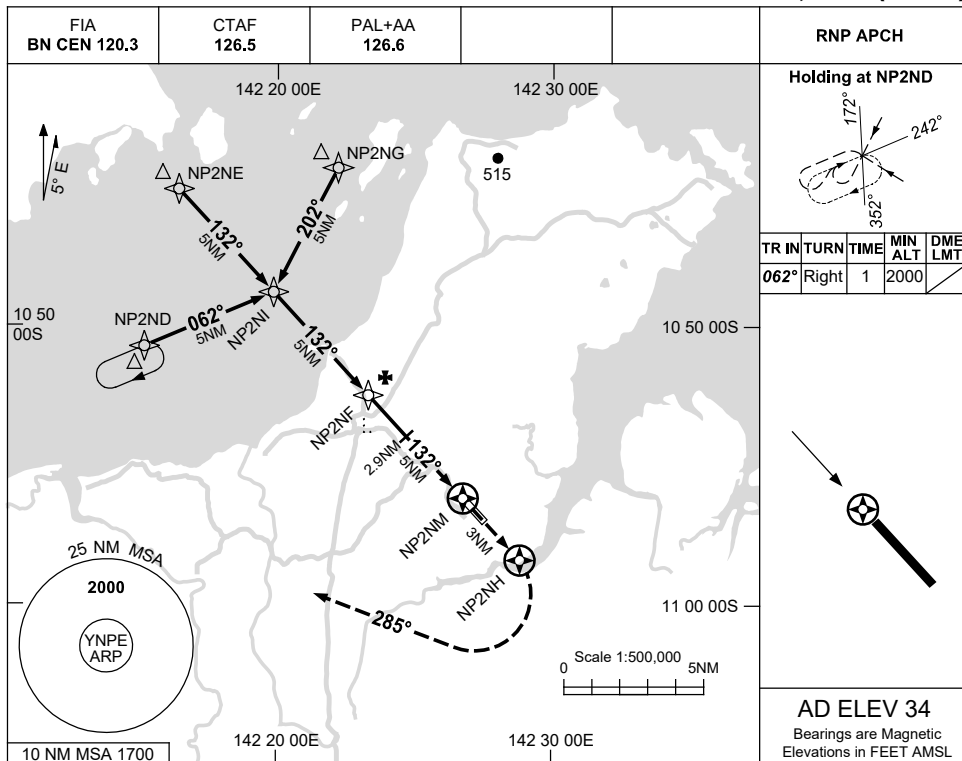


**USE QNH** RNP W  
**NORTHERN PENINSULA, QLD (YNPE)**

**13 JUN 2024**



**NOTES**

CATEGORY	A	B	C	D
				NOT APPLICABLE
CIRCLING	800 (766-2.4)		960 (926-4.0)	
ALTERNATE	(1266-4.4)		(1426-6.0)	

1. MAX IAS:  
INITIAL : 210KT.
2. PROC AND HOLDING PATTERN OVERLaid BY YHID NDB RWY 14 SEPARATION NOT ASSURED.

Changes: 10NM MSA, DIST-ALT TABLE, WPT NAMING CONVENTION, NOTE 2.

NPEGN01-179