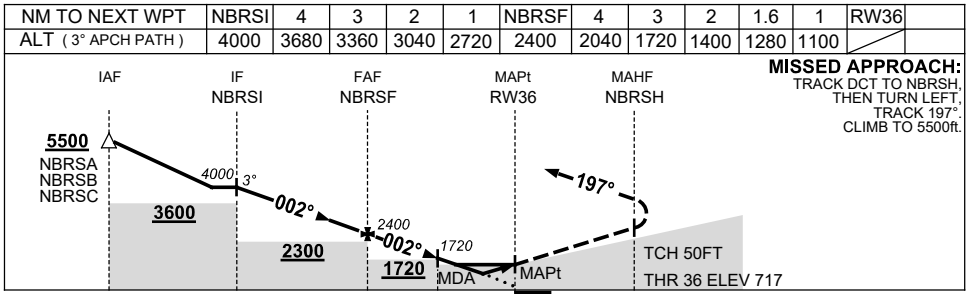
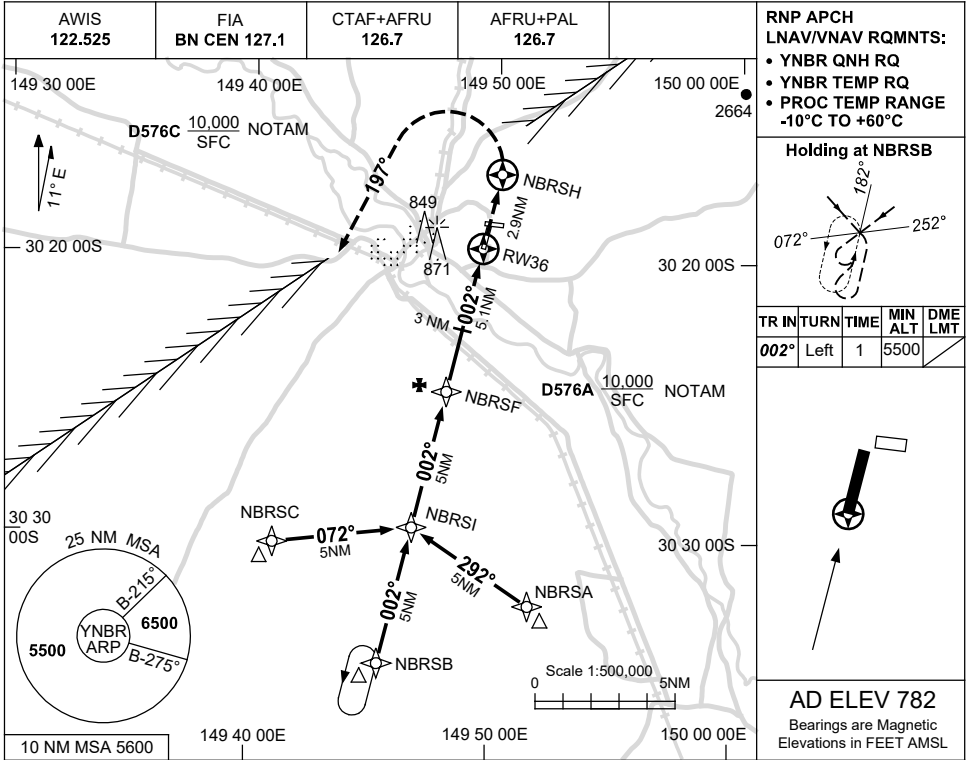


USE QNH

RNP RWY 36

21 MAR 2024

NARRABRI, NSW (YNBR)



**NOTES**

| CATEGORY  | A              | B              | C              | D              |
|-----------|----------------|----------------|----------------|----------------|
| LNAV/VNAV |                | 1100 (383-2.1) |                | NOT APPLICABLE |
| LNAV      |                | 1280 (563-3.2) |                |                |
| CIRCLING  | 1650 (868-2.4) |                | 1680 (898-4.0) |                |
| ALTERNATE | (1368-4.4)     |                | (1398-6.0)     |                |

1. MAX IAS: INITIAL : 210KT.

Changes: D576A & C ADDED, Editorial.

NBRGN01-178