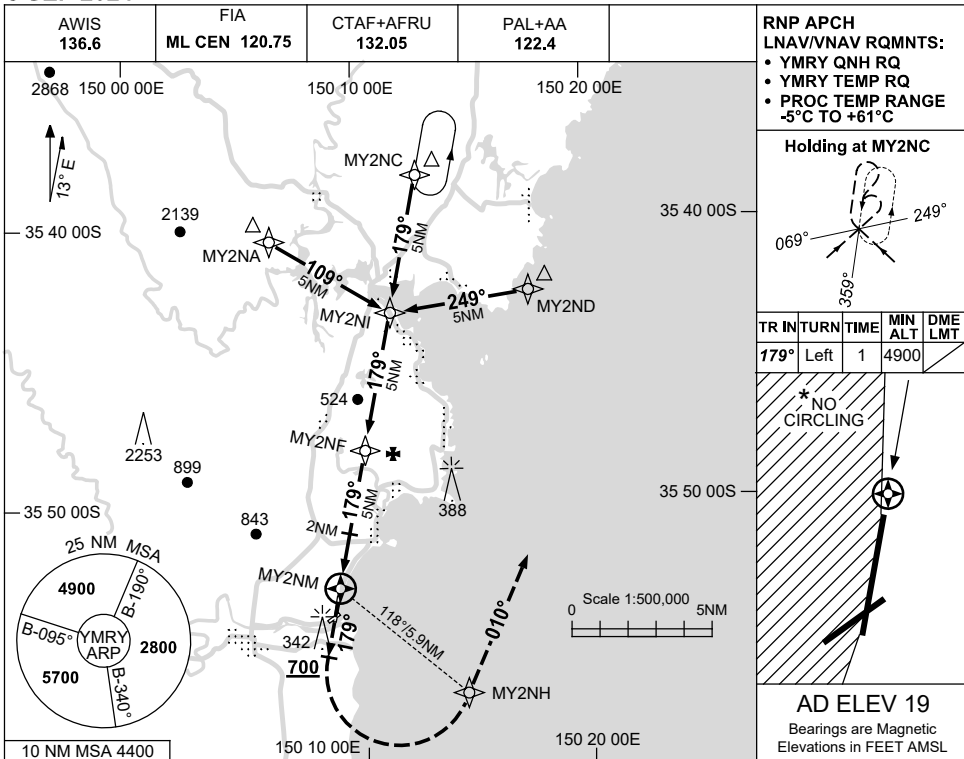


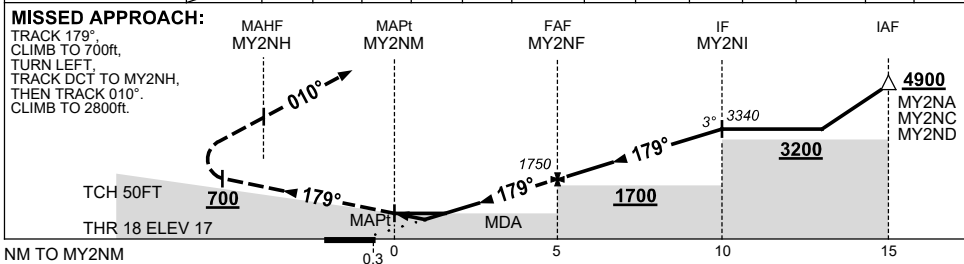
USE QNH

RNP RWY 18
MORUYA, NSW (YMRV)

5 SEP 2024



NM TO NEXT WPT	MY2NM	1	1.6	2	3	4	MY2NF	1	2	3	4	MY2NI	4.9
ALT (3° APCH PATH)	470	660	790	1110	1430	1750	2070	2380	2700	3020	3340	3340	4900



NOTES

CATEGORY	A	B	C	D
LNAV/VNAV	470 (453-2.5)			NOT APPLICABLE
LNAV	660 (641-3.6)			
CIRCLING *	780 (761-2.4)		880 (861-4.0)	
ALTERNATE	(1261-4.4)		(1361-6.0)	

1. MAX IAS: INITIAL : 210KT.
- * 2. NO CIRCLING WEST OF RWY 18 / 36.

Changes: THR ELEV, HAT, WPT NAMING CONVENTION, Editorial.

MRYGN01-180