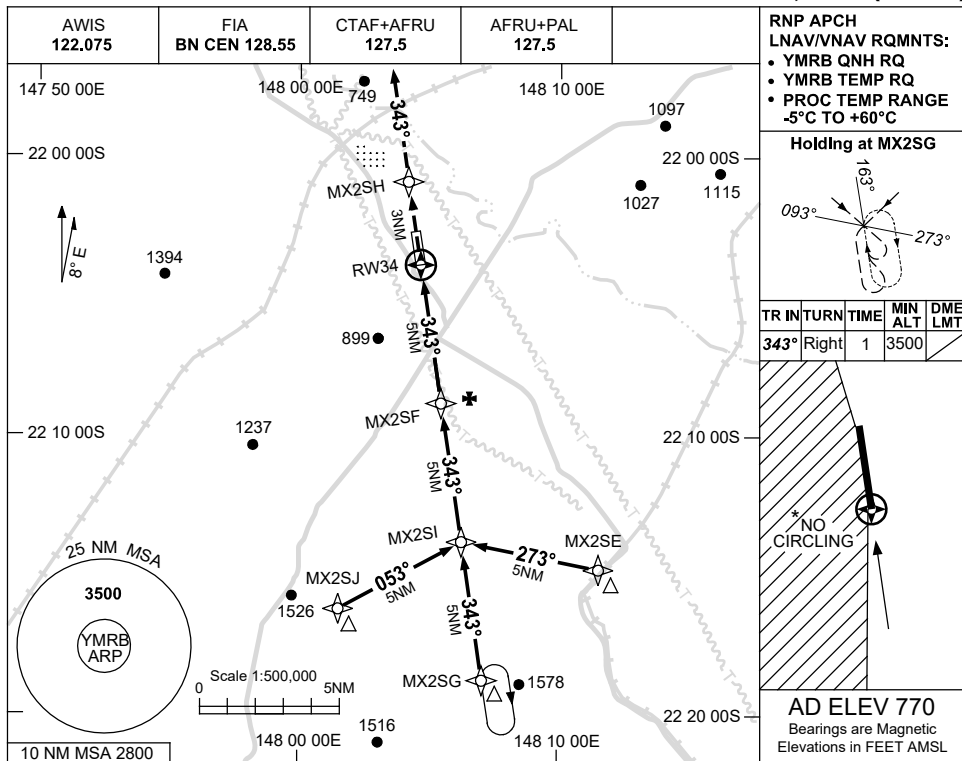


USE QNH

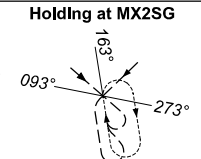
RNP RWY 34

13 JUN 2024

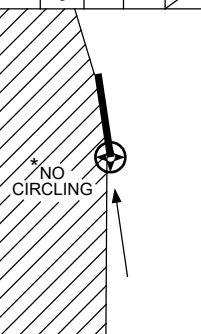
MORANBAH, QLD (YMRB)



RNP APCH
LNAV/VNAV RQMNTS:
• YMRB QNH RQ
• YMRB TEMP RQ
• PROC TEMP RANGE
-5°C TO +60°C

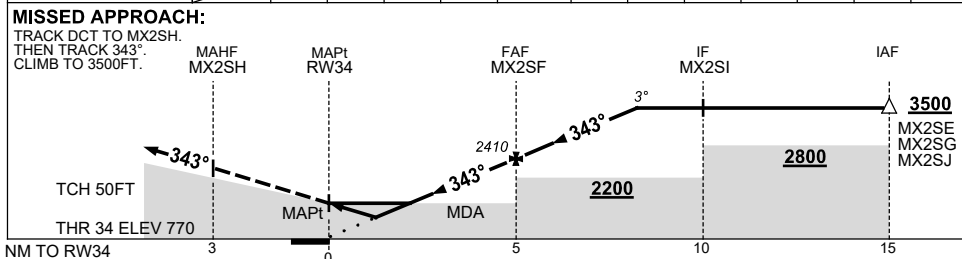


| TR | IN | TURN | TIME | MIN ALT | DME LMT |
|------|-------|------|------|---------|---------|
| 343° | Right | | 1 | 3500 | |



AD ELEV 770
Bearings are Magnetic
Elevations in FEET AMSL

| NM TO NEXT WPT | RW34 | 0.9 | 1.9 | 3 | 4 | MX2SF | 1 | 2 | 3 | 3.5 | | |
|--------------------|------|------|------|------|------|-------|------|------|------|------|--|--|
| ALT (3° APCH PATH) | | 1120 | 1440 | 1780 | 2090 | 2410 | 2730 | 3050 | 3370 | 3500 | | |



NOTES

| CATEGORY | A | B | C | D |
|-----------|----------------|----------------|----------------|----------------|
| LNAV/VNAV | | 1120 (350-2.0) | | NOT APPLICABLE |
| LNAV | | 1440 (670-3.8) | | |
| CIRCLING | 1580 (810-2.4) | | 1680 (910-4.0) | |
| ALTERNATE | | (1310-4.4) | (1410-6.0) | |

- MAX IAS: INITIAL : 210KT.
- BLASTING OPS WITHIN 5NM OF AD.
- NO CIRLING WEST OF RWY 16/34.

Changes: NO CIRCLING, WPT NAMING CONVENTION, NOTE.

MRBG02-179