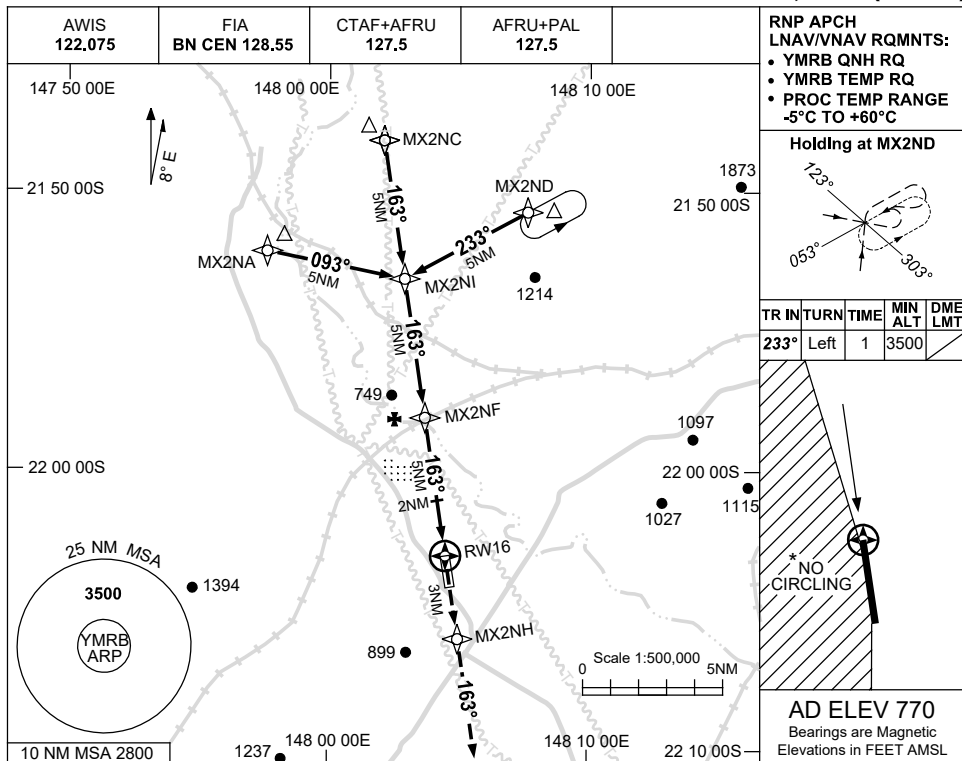


USE QNH

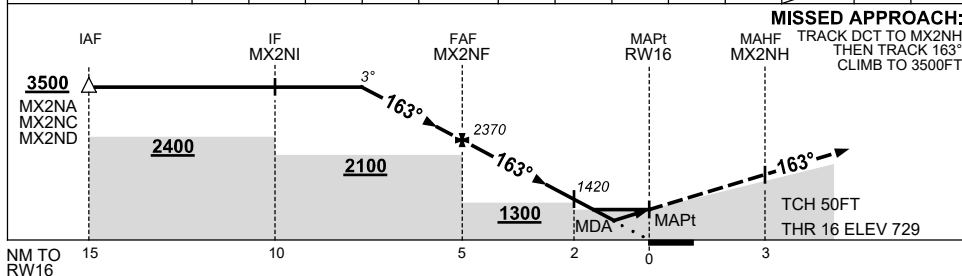
RNP RWY 16

13 JUN 2024

MORANBAH, QLD (YMRB)



NM TO NEXT WPT	3.6	3	2	1	MX2NF	4	3	2	1.5	0.9	RWY16		
ALT (3° APCH PATH)	3500	3330	3010	2690	2370	2050	1730	1420	1250	1060			



NOTES

CATEGORY	A	B	C	D
LNAV/VNAV		1060 (331-1.8)		NOT APPLICABLE
LNAV		1250 (521-2.9)		
CIRCLING	1580 (810-2.4)		1680 (910-4.0)	
ALTERNATE		(1310-4.4)	(1410-6.0)	

- MAX IAS: INITIAL : 210KT.
- BLASTING OPS WITHIN 5NM OF AD.
- *3. NO CIRLING WEST OF RWY 16/34.

Changes: NO CIRCLING, WPT NAMING CONVENTION, NOTE.

MRBGN01-179