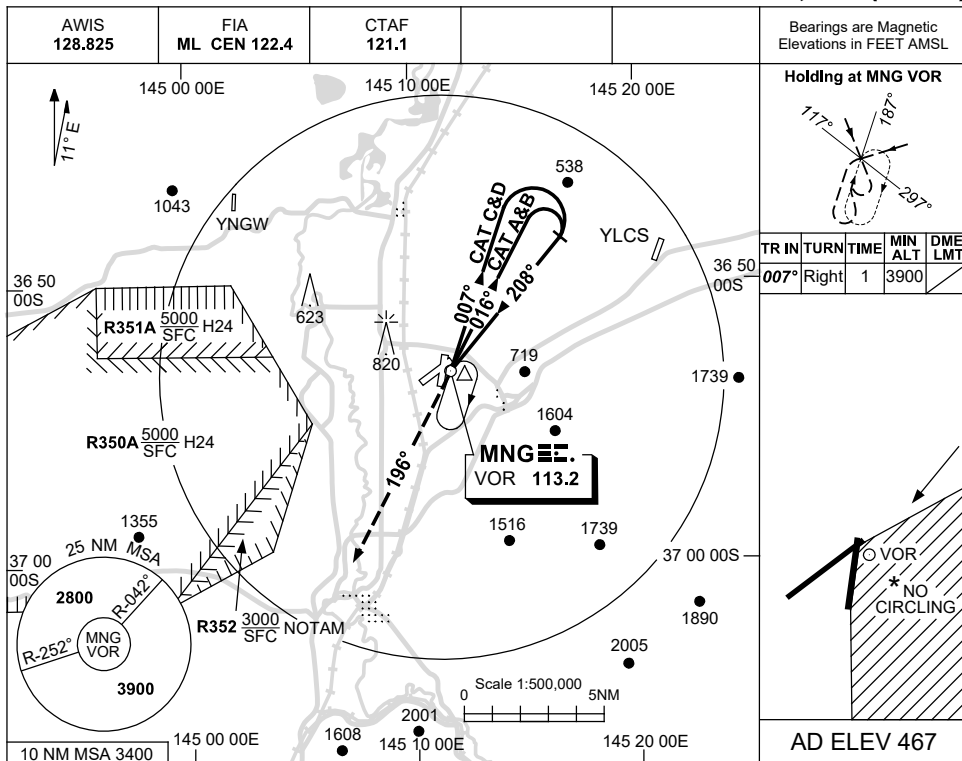


USE QNH

VOR RWY 23
MANGALORE, VIC (YMNG)

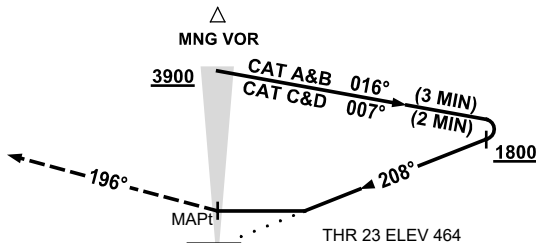
21 MAR 2024



DME DIST	NOT APPLICABLE				
ALT					

MISSED APPROACH:

TURN LEFT,
TRACK 196°.
CLIMB TO 3900ft.



NOTES

1. MAX IAS:
HOLDING : 180KT.
INITIAL :
CAT C&D : 180KT.
- *2. NO CIRCLING IN
SECTOR EAST OF RWY
18/36 AND STH EAST
OF RWY 05/23.
3. SEPARATION FM
R350A/B & R352 NOT
ASSURED WHEN
HLDG OR IN THE
MISSED APCH

CATEGORY	A	B	C	D
S-I VOR	1120 (653-3.7)			
CIRCLING *	1320 (853-2.4)	1420 (953-4.0)	1420 (953-5.0)	
ALTERNATE	(1353-4.4)	(1453-6.0)	(1453-7.0)	

Changes: NOTES.

MNGV001-178