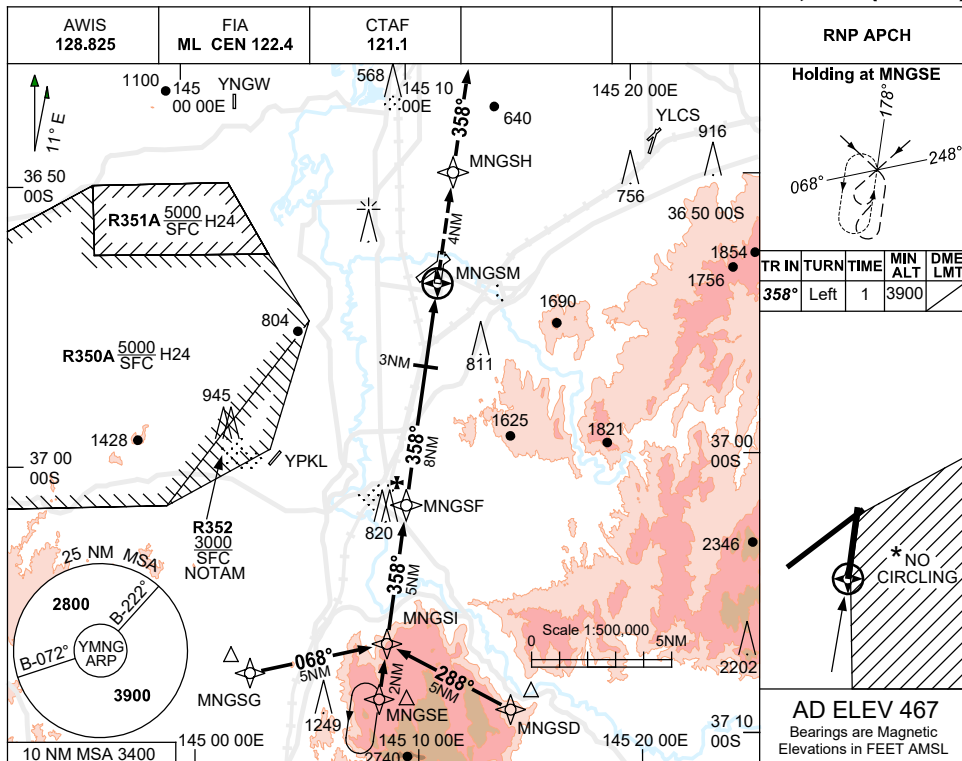


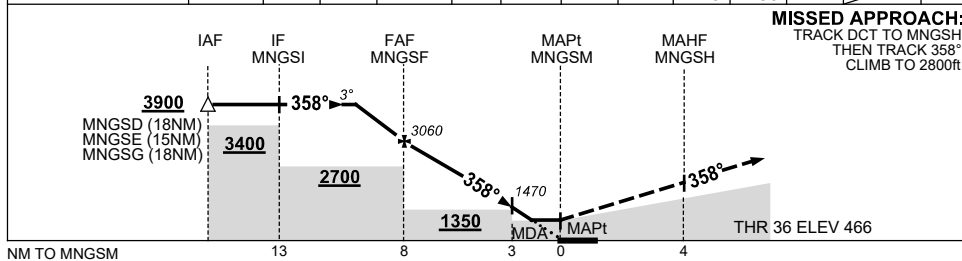
USE QNH

RNP RWY 36
MANGALORE, VIC (YMNG)

30 NOV 2023



NM TO NEXT WPT	2.6	2	1	MNGSF	7	6	5	4	3	2	1.8	MNGSM
ALT (3° APCH PATH)	3900	3700	3380	3060	2750	2430	2110	1790	1470	1150	1090	



NOTES

CATEGORY	A	B	C	D
LNAV	1090(623-3.4)			NOT APPLICABLE
CIRCLING *	1320(853-2.4)		1420(953-4.0)	
ALTERNATE	(1353-4.4)		(1453-6.0)	

- MAX IAS:
INITIAL :210KT
- NO CIRCLING IN SECTOR SOUTH EAST OF RWY 18/36 AND 05/23.
- COLOUR: SEE SPEC NOTES.

Changes: D366 REMOVED, Editorial.

MNGGN03-177