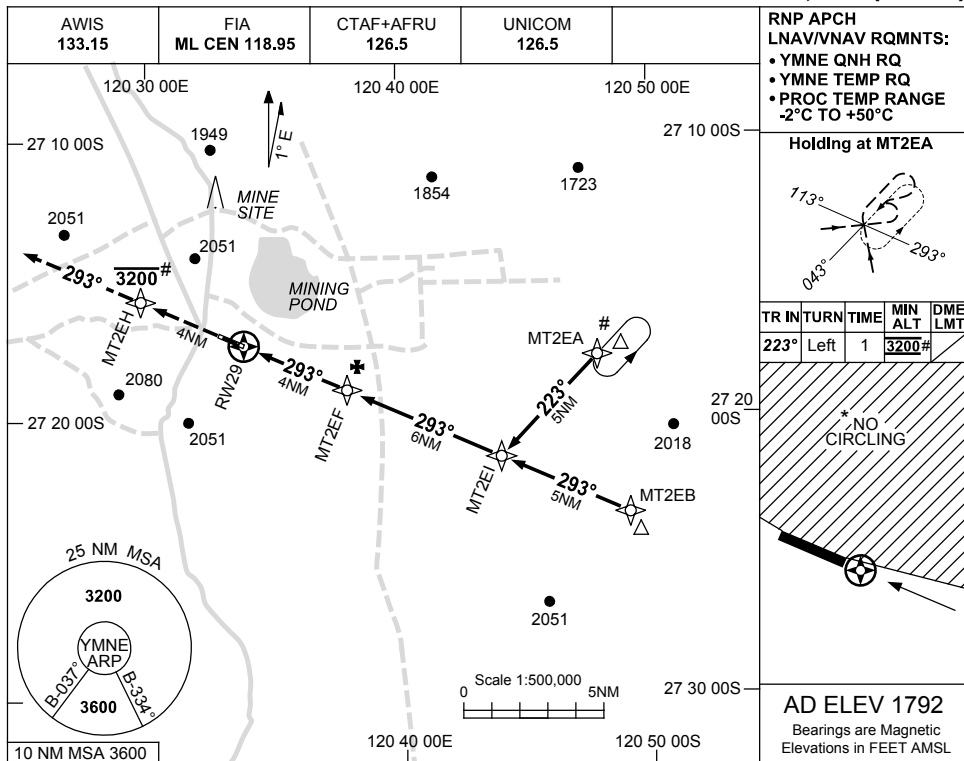


USE QNH

RNP RWY 29

MOUNT KEITH, WA (YMNE)

28 NOV 2024



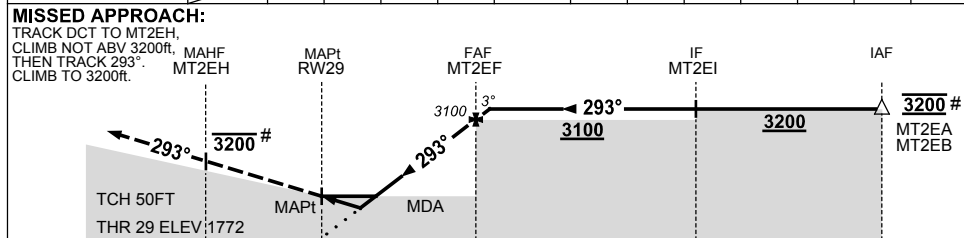
RNP APCH
LNAV/VNAV RQMTS:
 • YMNE QNH RQ
 • YMNE TEMP RQ
 • PROC TEMP RANGE
 -2°C TO +50°C

Holding at MT2EA

TR	IN	TURN	TIME	MIN ALT	DME LMT
223°	Left	1	3200#		

AD ELEV 1792
 Bearings are Magnetic
 Elevations in FEET AMSL

NM TO NEXT WPT	RW29	0.7	1.4	2	3	MT2EF	0.3				
ALT (3° APCH PATH)		2030	2270	2460	2780	3100	3200				



NOTES

- MAX IAS:
INITIAL : 210KT.
- NO CIRCLING NTH OF RWY 11 / 29.
- CAUTION:** PROC IS OVERLAID BY YBLU RNP RWY 19. PRESCRIBED ALTITUDES ENSURE SEPARATION.

CATEGORY	A	B	C	D
LNAV/VNAV		2030 (258-1.5)		NOT APPLICABLE
LNAV		2270 (498-2.8)		
CIRCLING *	2480 (688-2.4)		2600 (808-4.0)	
ALTERNATE	(1188-4.4)		(1308-6.0)	

Changes: MSA, REMOVED MT2EC SEGMENT, Editorial.

MNEGN02-181