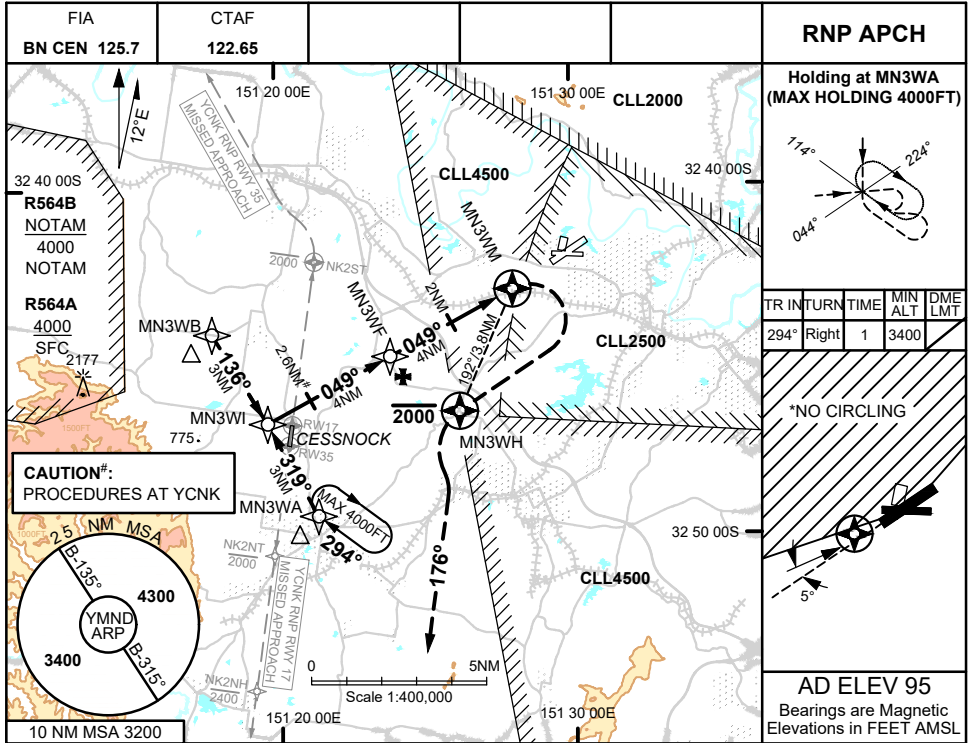
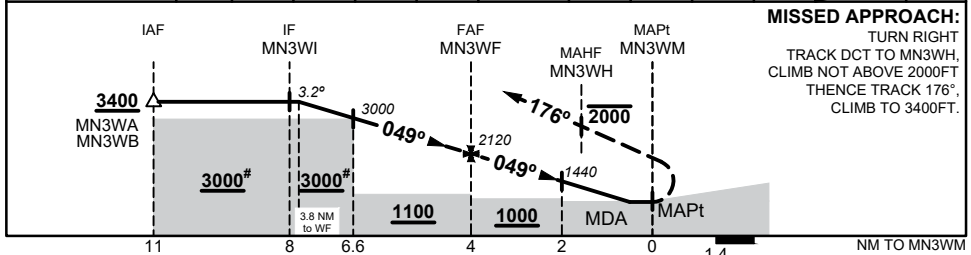


28 NOV 2024



NM TO NEXT WPT	3.8	3	2.6	2	1	MN3WF	3	2	1	0.5	MN3WM	
ALT (3.2° APCH PATH)	3400	3140	3000	2800	2460	2120	1780	1440	1100	930		



NOTES

- MAX IAS:
INITIAL : 140KTS
HOLDING : 140KTS
MAP TURN : 130KTS
- NO CIRCLING NW OF RWY 05/23.
- PROC OVERLIES YCNK RNP RWY 35 & RNP RWY 17. PRESCRIBED ALTITUDES ENSURE SEPARATION.
- AWIS (PHONE): 02 9353 6433

CATEGORY	A	B	C	D
CIRCLING*	930 (835 - 2.4)		NOT APPLICABLE	
ALTERNATE	(1335 - 4.4)			

Changes: CAUTION, INITIAL AND INTERMEDIATE SEGMENT, HOLDING, DIST/ALT TABLE, DESCENT ANGLE, TRACKS, YCNK MA, Editorial

MNDGN01-181