

**STANDARD INSTRUMENT ARRIVAL (STAR)  
ARBEY SEVEN ALPHA ARRIVAL (RNAV) RWY 27/34  
MELBOURNE, VIC (YMML)**

**21 MAR 2024**

ATIS 114.1 118.0	APP/DEP 118.9 132.0	TWR 120.5	SMC 121.7	Bearings are Magnetic Elevations in FEET AMSL
---------------------	------------------------	--------------	--------------	--

NOT TO SCALE

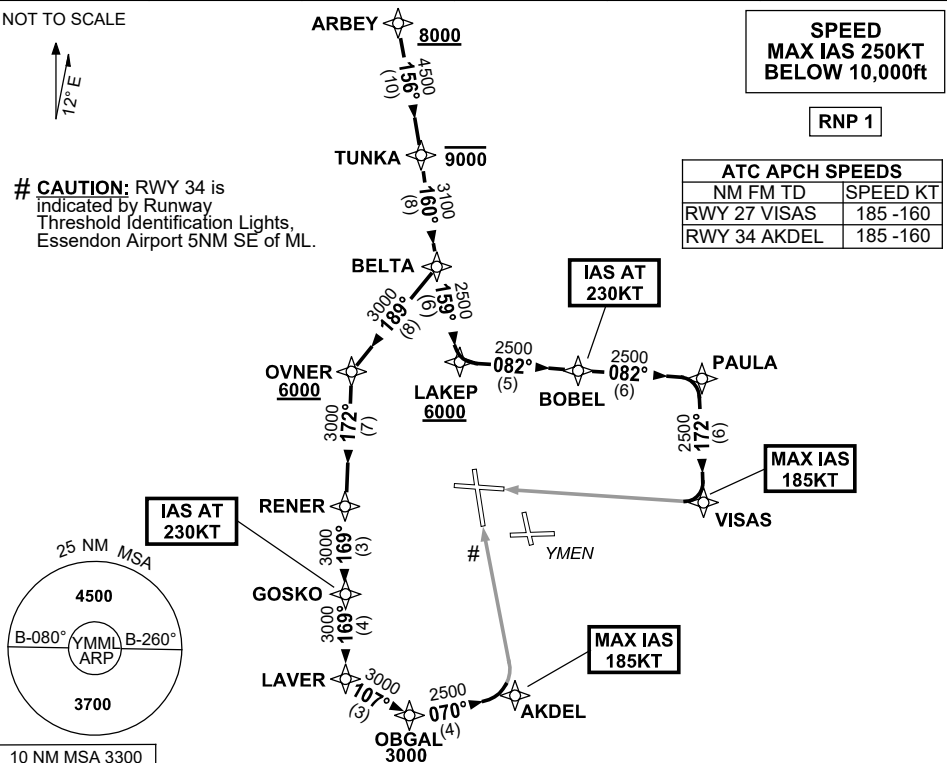


**SPEED  
MAX IAS 250KT  
BELOW 10,000ft**

**RNP 1**

ATC APCH SPEEDS	
NM FM TD	SPEED KT
RWY 27 VISAS	185 -160
RWY 34 AKDEL	185 -160

# **CAUTION:** RWY 34 is indicated by Runway Threshold Identification Lights, Essendon Airport 5NM SE of ML.



**ARRIVAL: ARBEY SEVEN ALPHA**

- **Cross** ARBEY AT or ABV 8000ft
- From ARBEY track 156° to TUNKA  
**Cross** TUNKA AT or BLW 9000ft, then:

**RWY 27:**

- Track 160° to BELTA
- Track 159° to LAKEP  
**Cross** LAKEP AT or ABV 6000ft
- Turn LEFT, track 082° to BOBEL  
**IAS AT 230KT** from BOBEL
- Track 082° to PAULA
- Turn RIGHT, track 172° to VISAS  
**MAX IAS 185KT** from VISAS
- Track via GLS RWY 27 or ILS RWY 27 or RNP RWY 27 or LOC RWY 27

**RWY 34:**

- Track 160° to BELTA
- Turn RIGHT, track 189° to OVNER  
**Cross** OVNER AT or ABV 6000ft
- Turn LEFT, track 172° to RENER
- Turn LEFT, track 169° to GOSKO  
**IAS AT 230KT** from GOSKO
- Track 169° to LAVER
- Turn LEFT, track 107° to OBGAL  
**Cross** OBGAL AT or ABV 3000ft
- Turn LEFT, track 070° to AKDEL  
**MAX IAS 185KT** from AKDEL
- Track via GLS RWY 34 or RNP RWY 34

**COMMUNICATIONS FAILURE: PROCEDURE IN IMC**

- Squawk 7600, comply with vertical navigation requirements, but not below MSA.
- Track via the latest STAR clearance to the nominated runway, then fly the most suitable approach in accordance with ERSA EMERG Section 1.5.

Changes: VAR.

MMLSR31-178