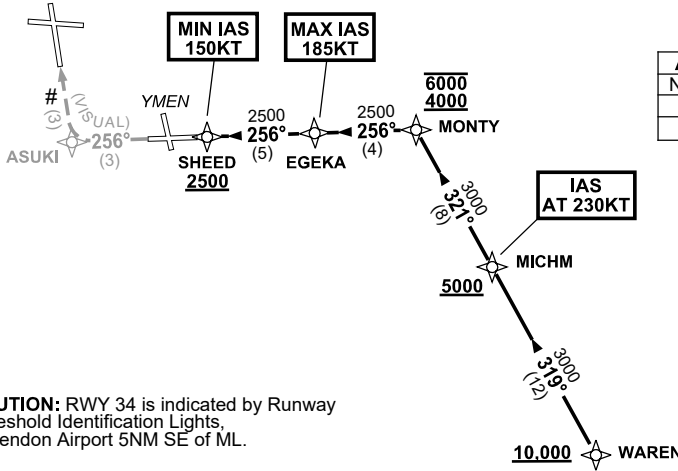


**STANDARD INSTRUMENT ARRIVAL (STAR)
WAREN EIGHT VICTOR ARRIVAL (RNAV)
MELBOURNE, VIC (YMML)**

21 MAR 2024

ATIS 114.1 118.0	APP 132.0	TWR 120.5	SMC 121.7		Bearings are Magnetic Elevations in FEET AMSL
---------------------	--------------	--------------	--------------	--	--

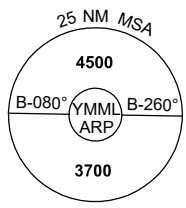
NOT TO SCALE



**SPEED
MAX IAS 250KT
BELOW 10,000FT**

RNP 1

ATC APCH SPEEDS	
NM FM TD	SPEED KT
EGEKA	185 -160
SHEED	160 -150



CAUTION: RWY 34 is indicated by Runway Threshold Identification Lights, Essendon Airport 5NM SE of ML.

10 NM MSA 3300

ARRIVAL: WAREN EIGHT VICTOR

RWY 34:

- Cross** WAREN AT or ABV 10,000ft
- From WAREN track 319° to MICHM
- Cross** MICHM AT or ABV 5000ft
- IAS AT 230KT** from MICHM
- Track 321° to MONTY
- Cross** MONTY BTN 4000ft and 6000ft
- Turn **LEFT**, track 256° to EGEKA
- MAX IAS 185KT** from EGEKA
- Track 256° to SHEED
- Cross** SHEED AT or ABV 2500ft
- MIN IAS 150KT** from SHEED
- Track 256° **VISUAL** to ASUKI
- Turn **RIGHT** for **VISUAL** intercept of final RWY 34

COMMUNICATIONS FAILURE: PROCEDURE IN IMC

- Squawk 7600, comply with vertical navigation requirements, but not below MSA.
- Track via the latest STAR clearance to the nominated runway, then fly the most suitable approach in accordance with ERSA EMERG Section 1.5.