

**STANDARD INSTRUMENT ARRIVAL (STAR)  
LIZZI NINE VICTOR ARRIVAL (RNAV)  
MELBOURNE, VIC (YMML)**

**21 MAR 2024**

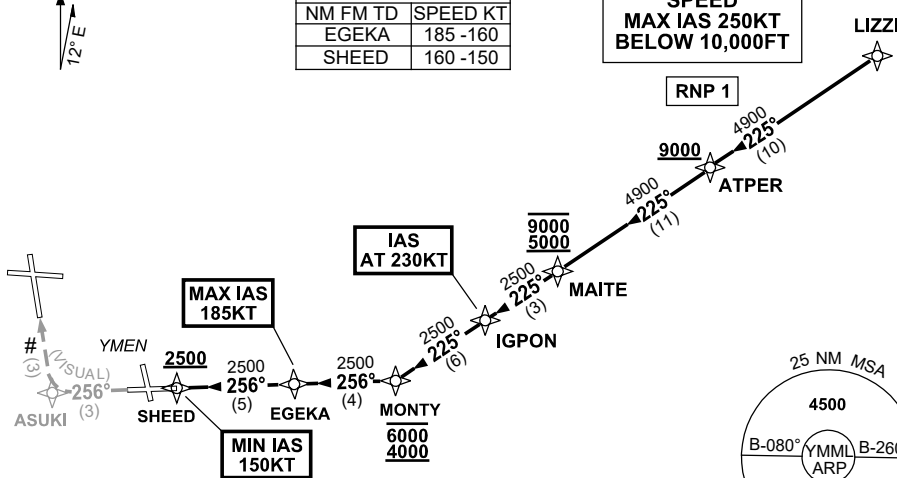
ATIS 114.1 118.0	APP 132.0	TWR 120.5	SMC 121.7	Bearings are Magnetic Elevations in FEET AMSL
---------------------	--------------	--------------	--------------	--

NOT TO SCALE



ATC APCH SPEEDS	
NM FM TD	SPEED KT
EGEKA	185 -160
SHEED	160 -150

**SPEED  
MAX IAS 250KT  
BELOW 10,000FT**



**# CAUTION:** RWY 34 is indicated by Runway  
Threshold Identification Lights,  
Essendon Airport 5NM SE of ML.

10 NM MSA 3300

**ARRIVAL: LIZZI NINE VICTOR**

**RWY 34 :**

- From LIZZI track 225° to ATPER  
**Cross** ATPER AT or ABV 9000ft
- Track 225° to MAITE  
**Cross** MAITE BTN 5000ft and 9000ft
- Track 225° to IGPON  
**IAS AT 230KT** from IGPON
- Track 225° to MONTY  
**Cross** MONTY BTN 4000ft and 6000ft
- Turn RIGHT, track 256° to EGEKA  
MAX IAS 185KT from EGEKA
- Track 256° to SHEED  
**Cross** SHEED AT or ABV 2500ft  
MIN IAS 150KT from SHEED
- Track 256° VISUAL to ASUKI
- Turn RIGHT for VISUAL intercept  
of final RWY 34

**COMMUNICATIONS FAILURE: PROCEDURE IN IMC**

- Squawk 7600, comply with vertical navigation requirements, but not below MSA.
- Track via the latest STAR clearance to the nominated runway, then fly the most suitable approach in accordance with ERS A EMERG Section 1.5.