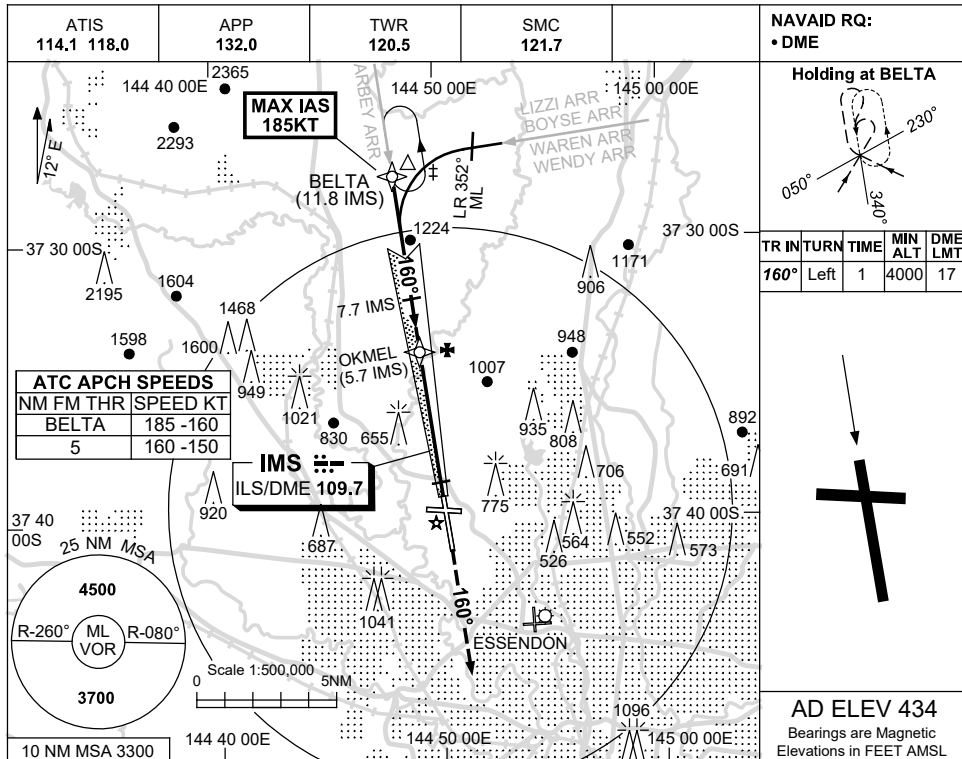
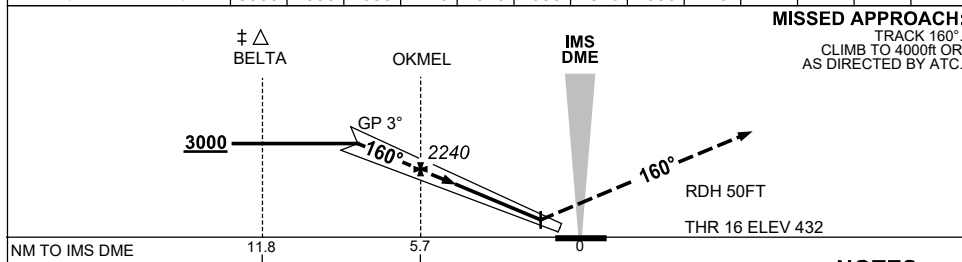


21 MAR 2024



NM TO IMS DME	8.1	7.7	7	5.7	5	4	3	2	1				
ALT (3° APCH PATH)	3000	2880	2650	2240	2010	1690	1370	1050	740				



- NOTES**
1. MAX IAS : BELTA : 185KT.
  2. SPECIAL AIRCREW & ACFT CERTIFICATION REQUIRED.
  - \* 3. SPECIAL ALT MNM 700/2.5KM.
  - \* 4. ACFT MAY BE RADAR VECTORED TO JOIN PROCEDURE FM STAR PRIOR TO FAP.

CATEGORY	A	B	C	D
S-I ILS CAT IIIb			75 RVR	
S-I ILS CAT IIIa		482 (50)	175 RVR	
S-I ILS CAT II		532 (100)	300 RVR	
ALTERNATE ‡	(1206-4.4)		(1516-6.0)	(1666-7.0)

Changes: VAR.

MMLII04-178