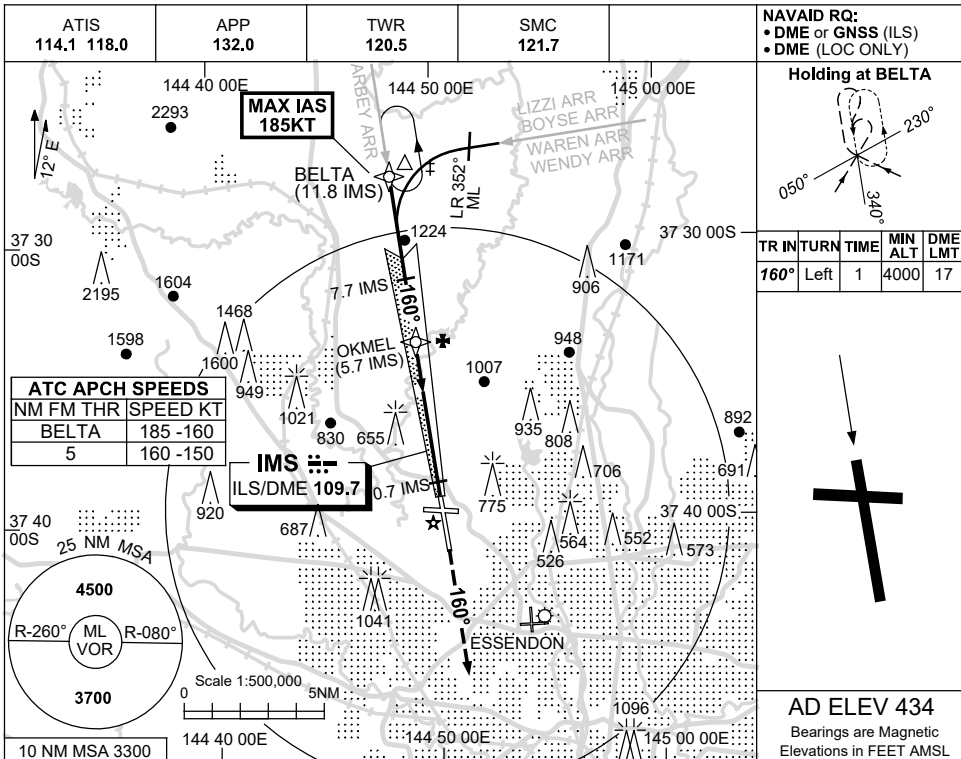
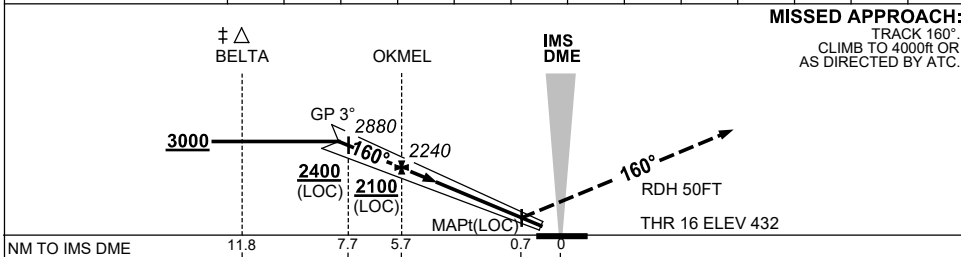


21 MAR 2024



NM TO IMS DME	8.1	7.7	7	5.7	5	4	3	2.3				
ALT (3° APCH PATH)	3000	2880	2650	2240	2010	1690	1370	1140				



NM TO IMS DME	11.8	7.7	5.7	0.7	0
NM TO THR 16	11.6	7.5	5.5	0.5	

CATEGORY	A	B	C	D
S-I ILS		640 (208) 0.8	550 RVR	
S-I LOC		1140 (706-3.1)		
CIRCLING	1140 (706-2.4)		1450 (1016-4.0)	1600 (1166-5.0)
ALTERNATE*	(1206-4.4)		(1516-6.0)	(1666-7.0)

1. MAX IAS :
 BELTA : 185KT.
- * 2. SPECIAL ALT MNM
 700/2.5 KM. (NOT APP.
 LICABLE TO LOC/DME).
- † 3. ACFT MAY BE
 RADAR VECTORED
 TO FNA OR JOIN
 PROCEDURE OFF
 STAR PRIOR TO FAF.

Changes: VAR.

MMLII03-178