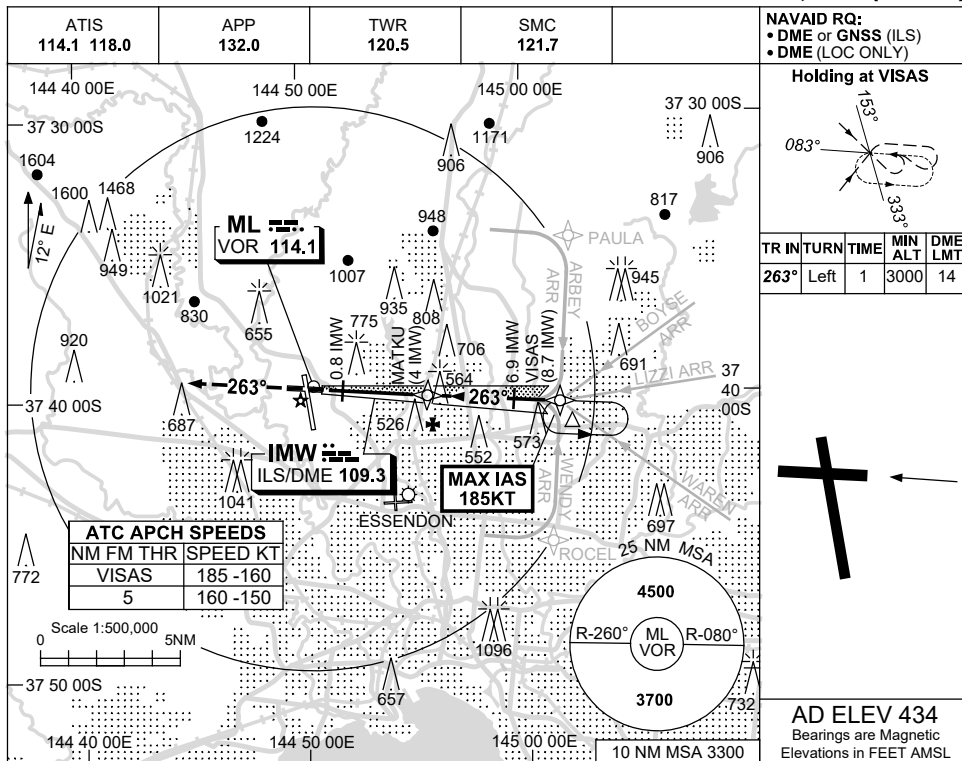


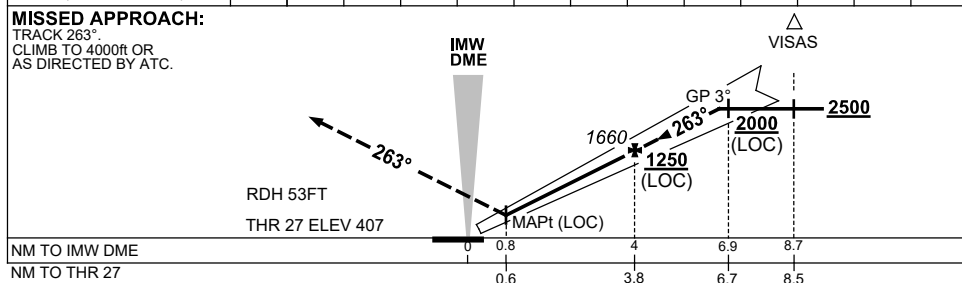
USE QNH

ILS-Z or LOC-Z RWY 27  
**MELBOURNE, VIC (YMML)**

5 SEP 2024



NM TO IMW DME	1.5	2	3	4	5	6	6.6				
ALT (3° APCH PATH)	880	1040	1360	1660	1990	2310	2500				



**NOTES**

CATEGORY	A	B	C	D
S-I ILS		610 (203)	0.8	550 RVR
S-I LOC		880 (473-1.9)		
CIRCLING	1140 (706-2.4)		1450 (1016-4.0)	1600 (1166-5.0)
ALTERNATE*	(1206-4.4)		(1516-6.0)	(1666-7.0)

- MAX IAS :  
VISAS : 185KT.
- SPECIAL ALTN MNM  
700/2.5 KM.

Changes: Editorial.

MMLII02-180