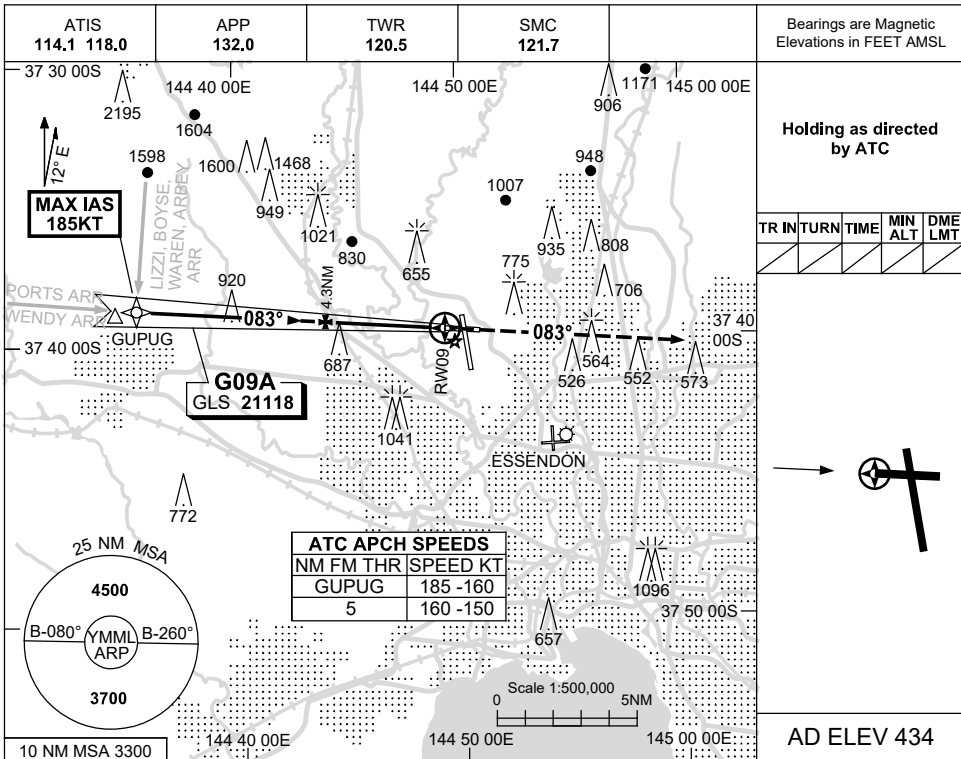


USE QNH

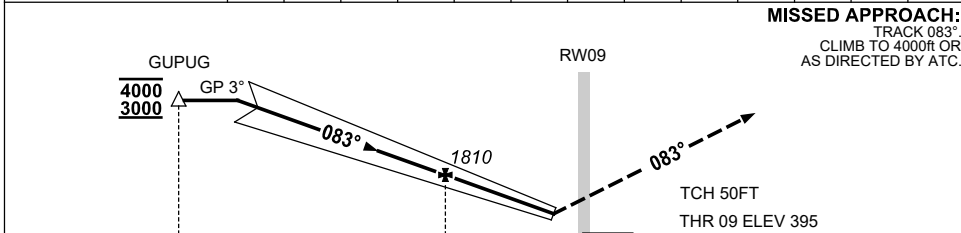
GLS RWY 09

MELBOURNE, VIC (YMML)

21 MAR 2024



NM TO RW09	8	7	6	5	4	3	2	1	0.5			
ALT (3° APCH PATH)	3000	2670	2360	2040	1720	1400	1080	760	600			



NOTES

- MAX IAS :
 GUPUG : 185KT.

CATEGORY	A	B	C	D
S-I GLS	600 (205) 1.5			
CIRCLING	1140 (706-2.4)	1450 (1016-4.0)	1600 (1166-5.0)	
ALTERNATE	(1206-4.4)	(1516-6.0)	(1666-7.0)	

Changes: VAR, ALT RQMNTS AT GUPUG.

MMLGL04-178