

STANDARD INSTRUMENT DEPARTURES (SID)  
 CRENA TWO, ESDIG FOUR (JET)(RNAV)  
 MELBOURNE, VIC (YMML)

5 SEP 2024

ATIS 114.1 118.0	ACD 127.2	SMC 121.7	TWR 120.5	DEP 129.4
---------------------	--------------	--------------	--------------	--------------

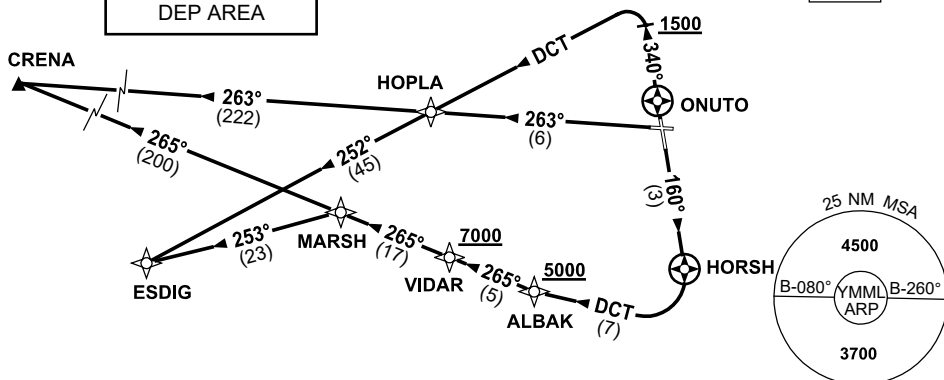
NOT TO SCALE



**CAUTION:**  
TRES IN RWY 34  
DEP AREA

**SPEED**  
MAX IAS 250KT  
BELOW 10,000ft

RNP 1



10 NM MSA 3300

**CRENA TWO DEPARTURE**  
**ESDIG FOUR DEPARTURE**

**RWY 16**

- GRAD 3.3%
- Track 160° to HORSH
- At HORSH turn RIGHT
- Track DCT to ALBAK  
**Cross** ALBAK AT or ABV 5000ft  
 (RQ GRAD TO ALBAK 8.5%)
- Track 265° to VIDAR  
**Cross** VIDAR AT or ABV 7000ft  
 (RQ GRAD TO VIDAR 6.6%)
- Track 265° to MARSH

**FOR ESDIG**

- From MARSH turn LEFT,
- Track 253° to ESDIG, thence as cleared

**FOR CRENA**

- Track 265° to CRENA, thence as cleared

**RWY 17**

- GRAD 3.3%
- Track 263° to HOPLA

**FOR ESDIG**

- From HOPLA turn LEFT
- Track 252° to ESDIG, thence as cleared

**FOR CRENA**

- From HOPLA track 263° to CRENA, thence as cleared

**RWY 34**

- GRAD 3.5% to 1200ft then 3.3%
- Track 340°
- AT or ABV 1500ft but not before ONUTO turn LEFT, track DCT to HOPLA

**FOR ESDIG**

- From HOPLA track 252° to ESDIG, thence as cleared

**FOR CRENA**

- From HOPLA track 263° to CRENA, thence as cleared