

**STANDARD INSTRUMENT DEPARTURES (SID)
MELBOURNE SIX DEPARTURE (RADAR)
MELBOURNE, VIC (YMML)**

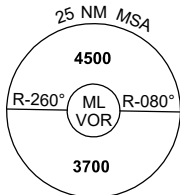
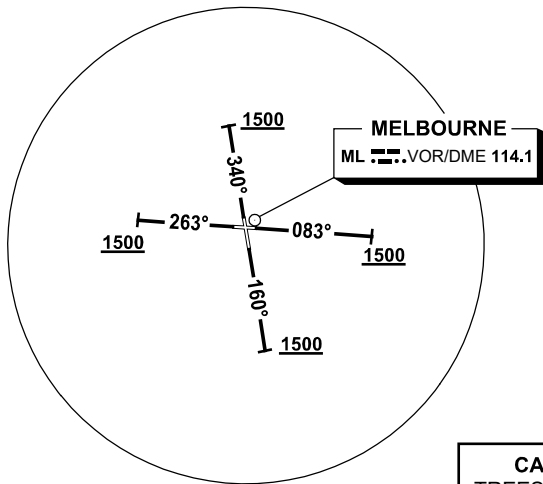
21 MAR 2024

ATIS 114.1 118.0	ACD 127.2	SMC 121.7	TWR 120.5 322.4	DEP TR NW, N, NE 118.9 TR SW, S, SE 129.4
---------------------	--------------	--------------	--------------------	---

NOT TO SCALE



**SPEED
MAX IAS 250KT
BELOW 10,000ft**



**CAUTION:
TREES IN RWY 34
DEP AREA**

10 NM MSA 3300

MELBOURNE SIX DEPARTURE (RADAR)

RWY 09

- GRAD 3.3% (4.8% to 3000ft)
- Track 083°
- AT or ABV 1500ft turn to assigned heading or track

RWY 16

- GRAD 3.3% (5.5% to 5000ft)
- Track 160°
- AT or ABV 1500ft turn to assigned heading or track

RWY 27

- GRAD 3.3% (5.0% to 4000ft)
- Track 263°
- AT or ABV 1500ft turn to assigned heading or track

RWY 34

- GRAD 3.5% to 1200ft then 3.3% (5.4% to 3500ft)
- Track 340°
- AT or ABV 1500ft turn to assigned heading or track

COMMUNICATIONS FAILURE PROCEDURE

On recognition of communication failure

- Squawk 7600
- Maintain last assigned vector for two minutes and, if necessary, climb to minimum safe altitude to maintain terrain clearance, then
- Proceed in accordance with the latest ATC route clearance acknowledged.

Changes: VAR.

MMLDP01-178