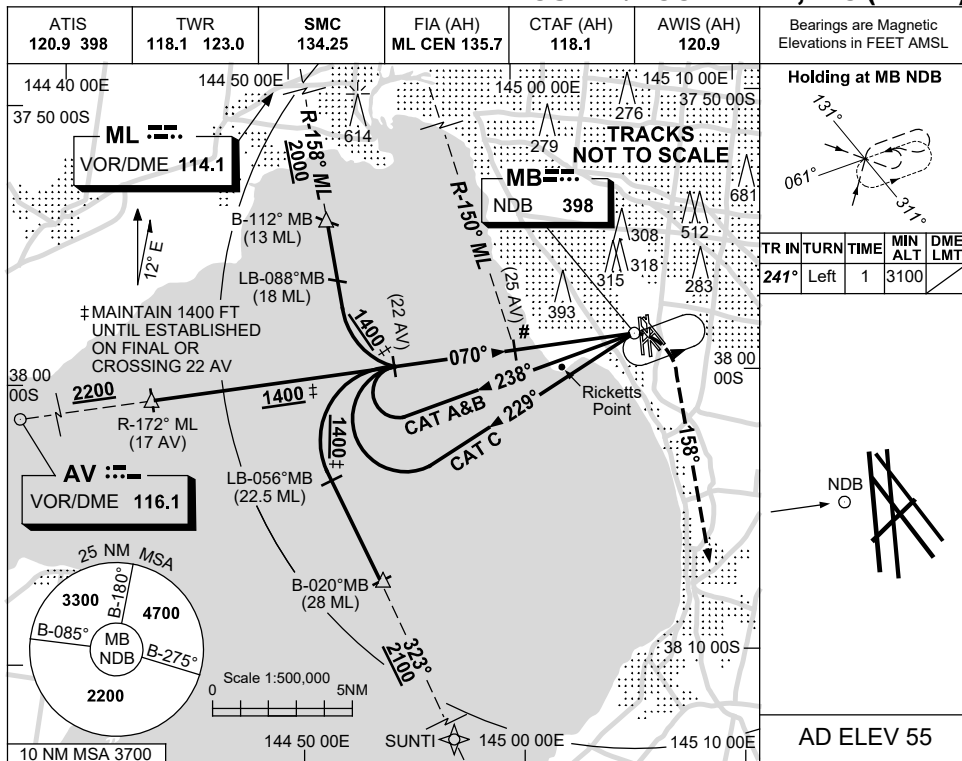


USE QNH

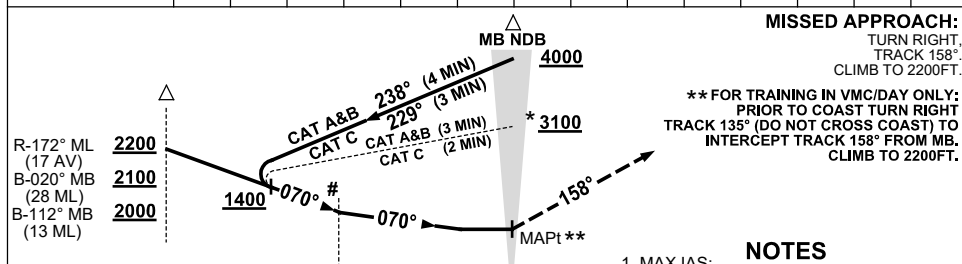
NDB-A

15 JUN 2023

MELBOURNE/MOORABBIN, VIC (YMMB)



DME DIST	NOT APPLICABLE				
ALT					



NM TO MB NDB	5	0			
NM FM AV DME	25				

CATEGORY	A	B	C
CIRCLING	720 (665-2.4)		1010 (955-4.0)
ALTERNATE	(1165-4.4)		(1455-6.0)

- NOTES**
1. MAX IAS:  
INITIAL : CAT A&B 140KT.  
CAT C 180KT.
  - \* 2. ALTERNATIVE PROC REQUIRES ATC APV.
  - # 3. IN VMC, ALL ACFT MUST BE BLW 800FT AS SOON AS POSSIBLE. (VOR or DME EQUIPPED ACFT BY R-150° ML or 25 DME AV).
  4. NAP - IF VISUAL BLW 1000FT BEFORE CROSSING COAST & LDG YMMB, TR S OF RICKETTS POINT TO JOIN CCT.
  5. AV - MB TRACK CONFLICTS WITH YMPC RNP RWY 35 NEAR 17AV.

Changes: REMOVE PLUME SYMBOL.

MMBNB01-175