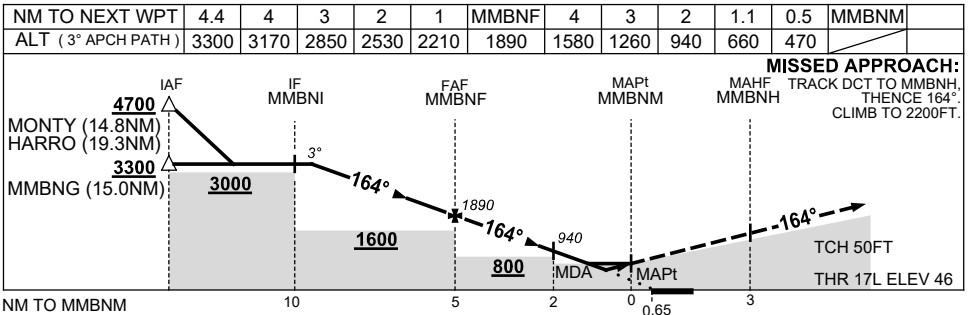
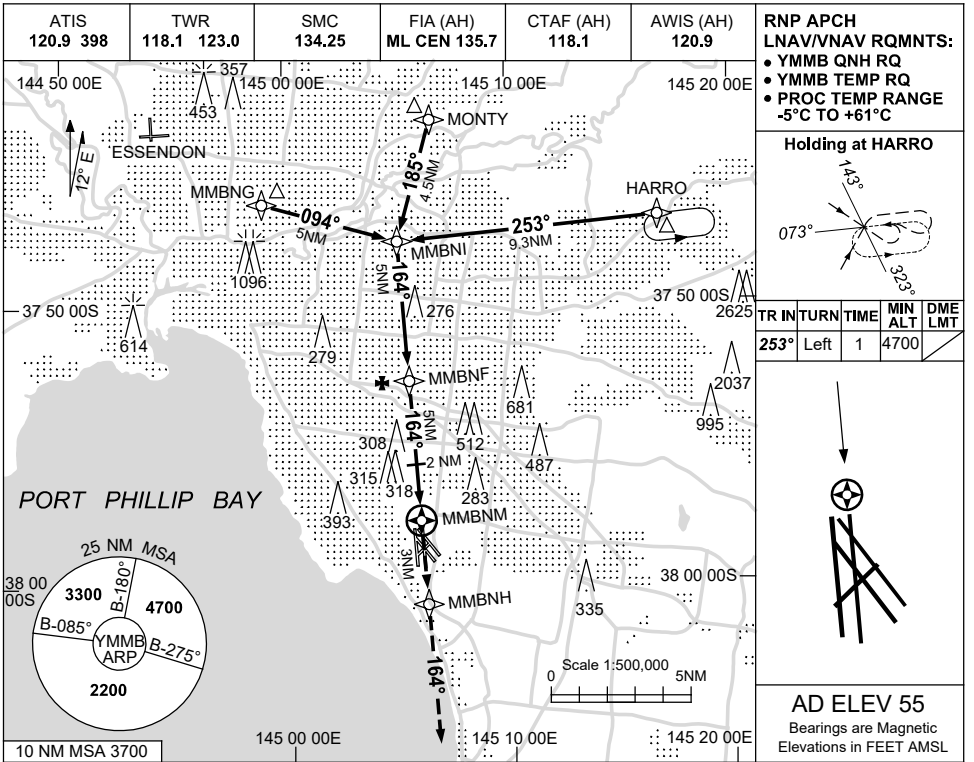


USE QNH

RNP Rwy 17L

24 MAR 2022

MELBOURNE/MOORABBIN, VIC (YMMB)



**NOTES**

CATEGORY	A	B	C	D
LNAV/VNAV		470 (424-2.4)		NOT APPLICABLE
LNAV		660 (614-3.5)		
CIRCLING	720 (665-2.4)		1010 (955-4.0)	
ALTERNATE	(1165-4.4)		(1455-6.0)	

1. MAX IAS:  
INITIAL : 210KT.
2. PROCEDURE LEAVES AND RE-ENTERS CONTROLLED AIRSPACE IN THE FINAL SEGMENT.
3. PROCEDURE NOT AVBL FOR TRAINING.

Changes: SMC FREQUENCY.

MMBGN02-170