

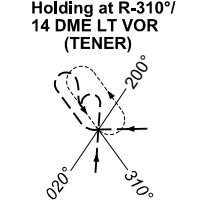
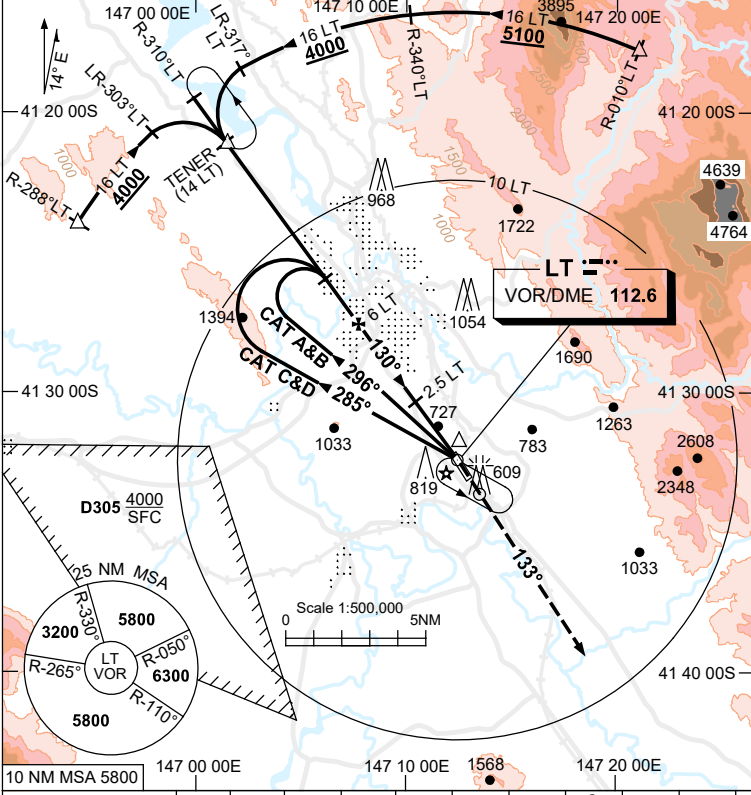
USE QNH

VOR RWY 14R
LAUNCESTON, TAS (YMLT)

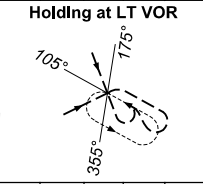
28 NOV 2024

ATIS 112.6 (TWR HR) 134.75 (H24)	AWIS (AH) 112.6	TWR 118.7	LT APP/FIA (AH) ML CEN 123.8	CTAF+AFRU (AH) 118.7	AFRU+PAL (AH) 118.7
--	--------------------	--------------	---------------------------------	-------------------------	------------------------

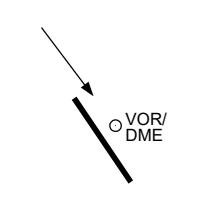
Bearings are Magnetic
Elevations in FEET AMSL



TR IN	TURN	TIME	MIN ALT	DME LMT
130°	Left	1	4000	

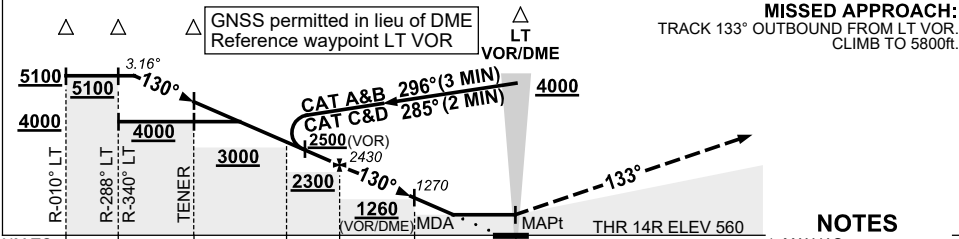


TR IN	TURN	TIME	MIN ALT	DME LMT
285°	Left	1	4000	



AD ELEV 562

DIST TO LT DME	13.9	13	12	11	10.7	10	9	8	7	6	5	4	2.9	2.4
ALT(3.16° APCH PATH)	5100	4780	4440	4110	4000	3780	3440	3100	2770	2430	2100	1760	1390	1240



NM TO LT DME: 16, 16, 14, 10, 6, 2.5, 0
THR 14R ELEV 560

- NOTES**
- MAX IAS:
INITIAL : 180KT.
HLDG AT LT VOR: 195KT.
HLDG AT LT R-310°/14: 220KT.
 - SPECIAL ALT MNM
1000/5.0KM.
 - COLOUR: SEE SPEC NOTICES.
 - HOLDING AT TENER NOT CONTAINED IN CTA.

CATEGORY	A	B	C	D
S-I VOR/DME		1240 (678-3.8)		
S-I VOR		1390 (828-4.7)		
CIRCLING	1440 (878-2.4)		1670 (1108-4.0)	1670 (1108-5.0)
ALTERNATE*	(1378-4.4)		(1608-6.0)	(1608-7.0)

Changes: Editorial.

MLTVO01-181