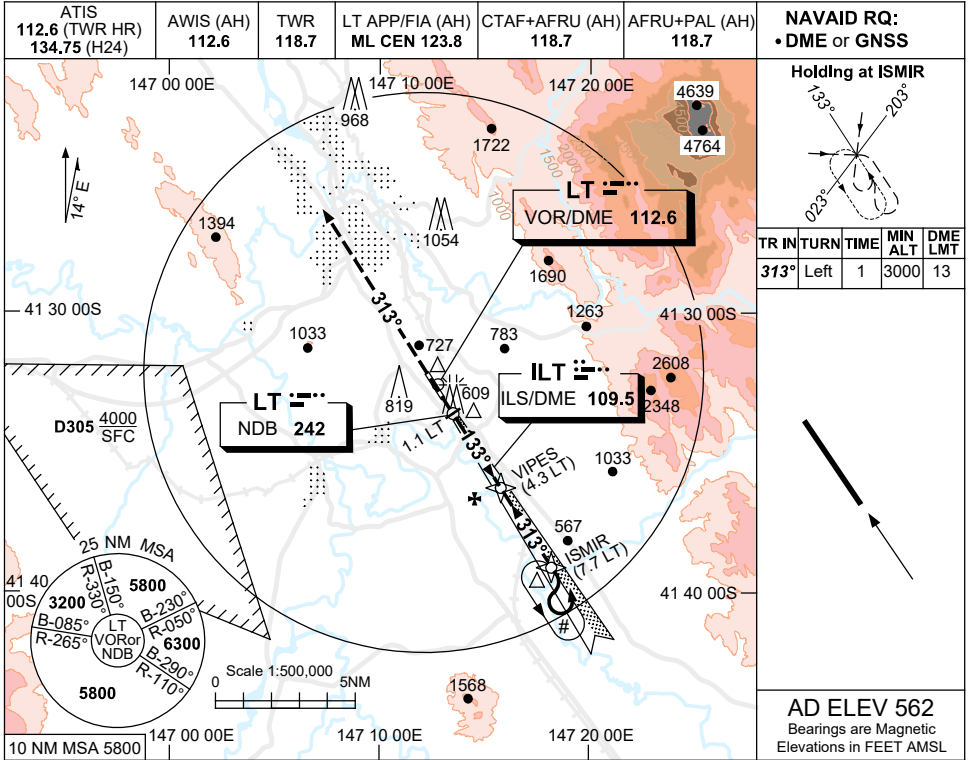


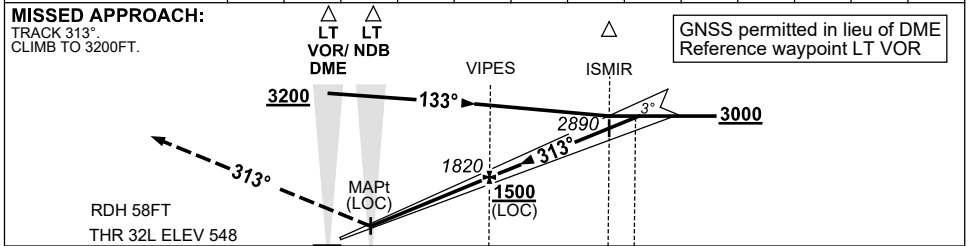
USE QNH

ILS-Y or LOC-Y RWY 32L
LAUNCESTON, TAS (YMLT)

1 DEC 2022



NM TO LT DME	1.9	2	3	4	4.3	5	6	7	7.7	8		
ALT (3° APCH PATH)	1040	1080	1400	1710	1820	2030	2350	2670	2890	3000		



NM TO LT DME	0	1.1	4.3	7.7	8
NM TO THR 32L	0	0.6	3.8	7.2	7.5

NOTES

- ‡1. SPECIAL ALTN MNM 1000/5.0KM.
- 2. HOLDING PATTERN NOT CONTAINED WITHIN CTA.
- 3. COLOUR: SEE SPEC NOTICES.
- #4. 45°/180° PROC TURN NOT PERMITTED.

CATEGORY	A	B	C	D
S-I ILS		850 (302) 0.8		
S-I LOC		1040 (492-1.8)		
CIRCLING	1440 (878-2.4)		1670 (1108-4.0)	1670 (1108-5.0)
ALTERNATE ‡	(1378-4.4)		(1608-6.0)	(1608-7.0)

Changes: FROM SUP H37/22.

MLTII01-173