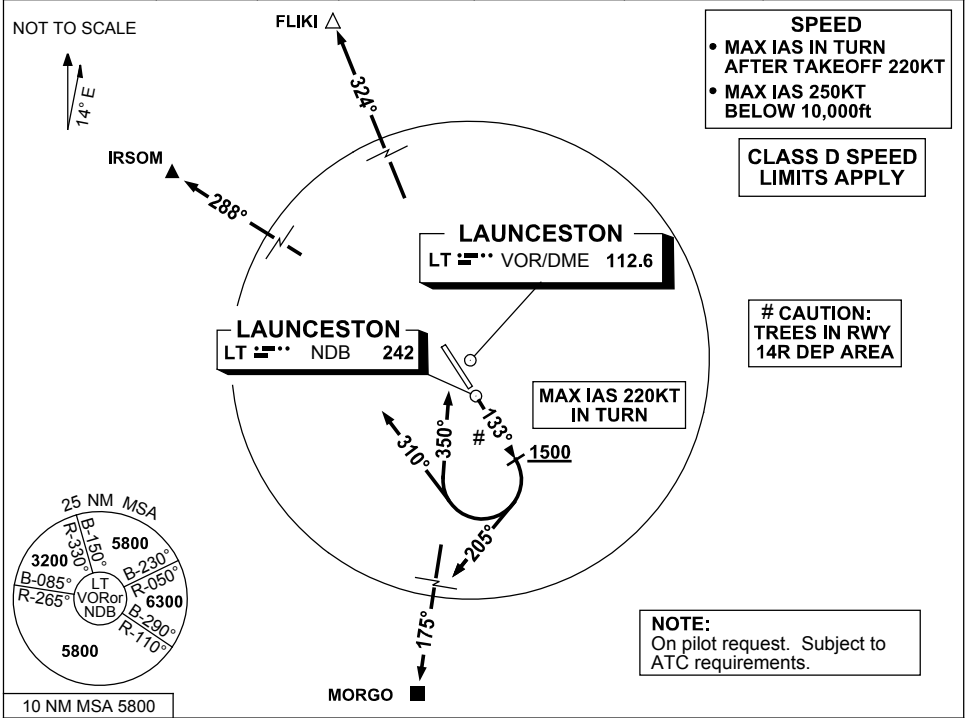


**STANDARD INSTRUMENT DEPARTURES (SID)
RWY 14R CHARLIE (NON-JET)
LAUNCESTON TAS (YMLT)**

28 NOV 2024

ATIS 112.6 (TWR HR) 134.75 (H24)	AWIS (AH) 112.6	TWR 118.7	LT APP/FIA (AH) ML CEN 123.8	CTAF+AFRU (AH) 118.7	AFRU+PAL (AH) 118.7	Bearings are Magnetic Elevations in FEET AMSL
----------------------------------------	--------------------	--------------	---------------------------------	-------------------------	------------------------	--------------------------------------------------



IR SOM	TWO	CHARLIE	DEPARTURE	MORG0	TWO	CHARLIE	DEPARTURE
FLIKI	ONE	CHARLIE	DEPARTURE				
<p>RWY 14R</p> <ul style="list-style-type: none"> Track 133° (MAX IAS 220KT IN TURN) <p>FOR IR SOM</p> <ul style="list-style-type: none"> GRAD 3.3% AT or ABV 1500ft turn RIGHT track 310° Intercept route as cleared <p>FOR FLIKI</p> <ul style="list-style-type: none"> GRAD 3.3% AT or ABV 1500ft turn RIGHT track 350° Intercept route as cleared by 5 DME North of LT <p>FOR MORG0</p> <ul style="list-style-type: none"> GRAD 4% TO 2100ft then 3.3% AT or ABV 1500ft turn RIGHT track 205° Track 205° Intercept route as cleared 							

Changes: FLIKI ONE CHARLIE SID. MLTDP03-181