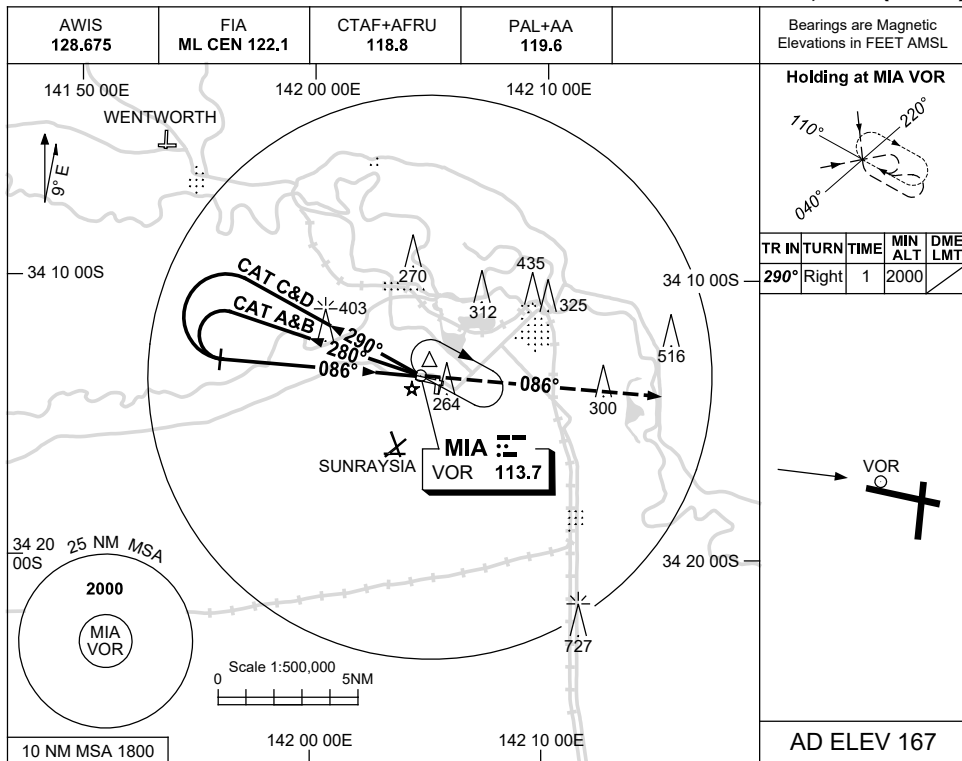


USE QNH

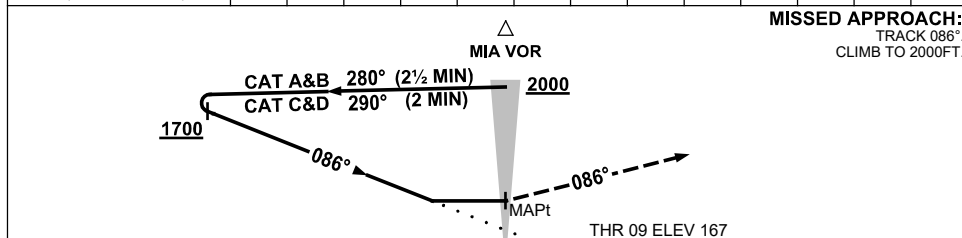
VOR-Y RWY 09
MILDURA, VIC (Y Mia)

23 MAR 2023



AD ELEV 167

DIST BY DME	NOT APPLICABLE
ALT (3° APCH PATH)	



NOTES

CATEGORY	A	B	C	D
S-I VOR	780 (613-3.5)			
CIRCLING	840 (673-2.4)	900 (733-4.0)	980 (813-5.0)	
ALTERNATE	(1173-4.4)	(1233-6.0)	(1313-7.0)	

1. MAX IAS:
INITIAL : 210KT.

Changes: SUNRAYSLIA ALA.

MIAVO04-174