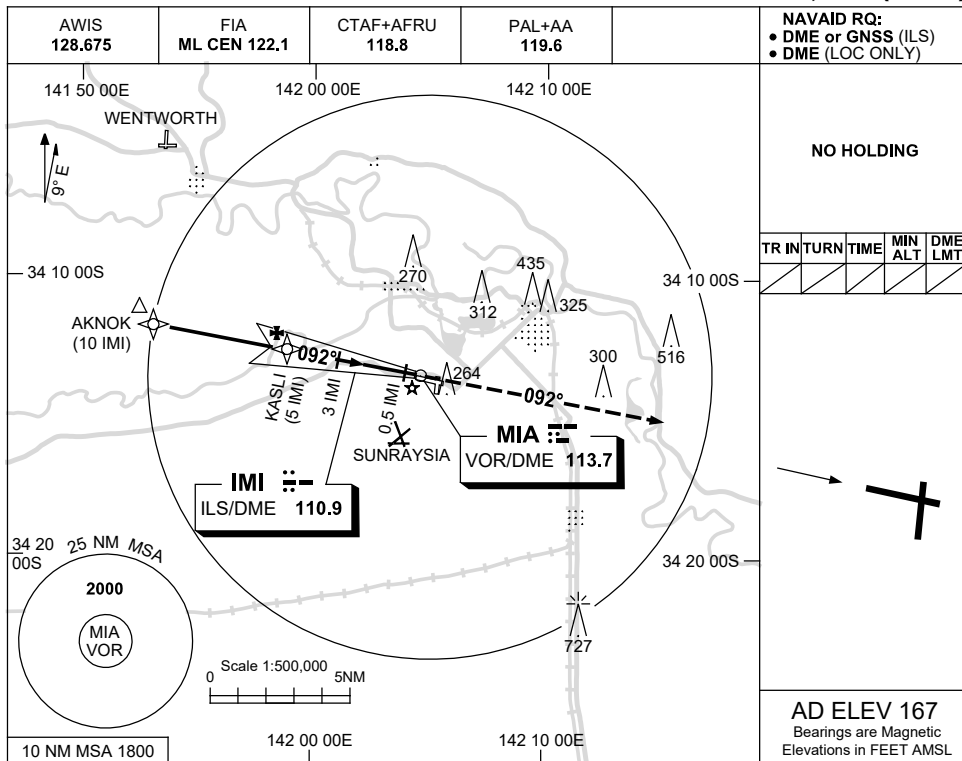


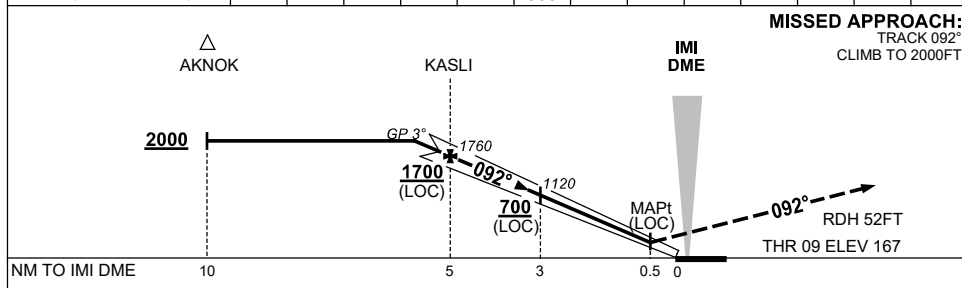
USE QNH

ILS-Y or LOC-Y RWY 09
MILDURA, VIC (YMIA)

23 MAR 2023



NM TO IMI DME	5.8	5	4	3	2	1.6							
ALT (3° APCH PATH)	2000	1760	1440	1120	800	660							



NM TO IMI DME	10	5	3	0.5	0								
NM TO THR 09	9.8	4.8	2.8	0.3									

MISSED APPROACH:
TRACK 092°.
CLIMB TO 2000FT.

RDH 52FT
THR 09 ELEV 167

NOTES

CATEGORY	A	B	C	D
S-I ILS	NOT APPLICABLE		470 (303) 1.7 (VIS 1.5 WITH ACTUAL QNH)	
S-I LOC			660 (493-2.8)	
CIRCLING			900 (733-4.0)	980 (813-5.0)
ALTERNATE			(1233-6.0)	(1313-7.0)

Changes: FROM SUP H113/22 AND SUNRAYSIA ALA.

MIAI02-174