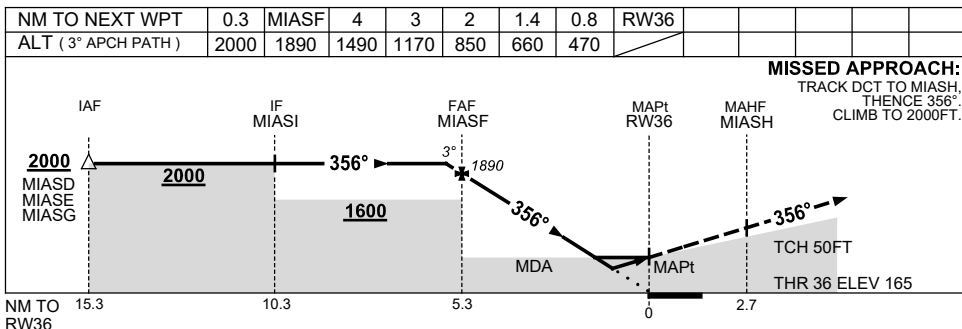
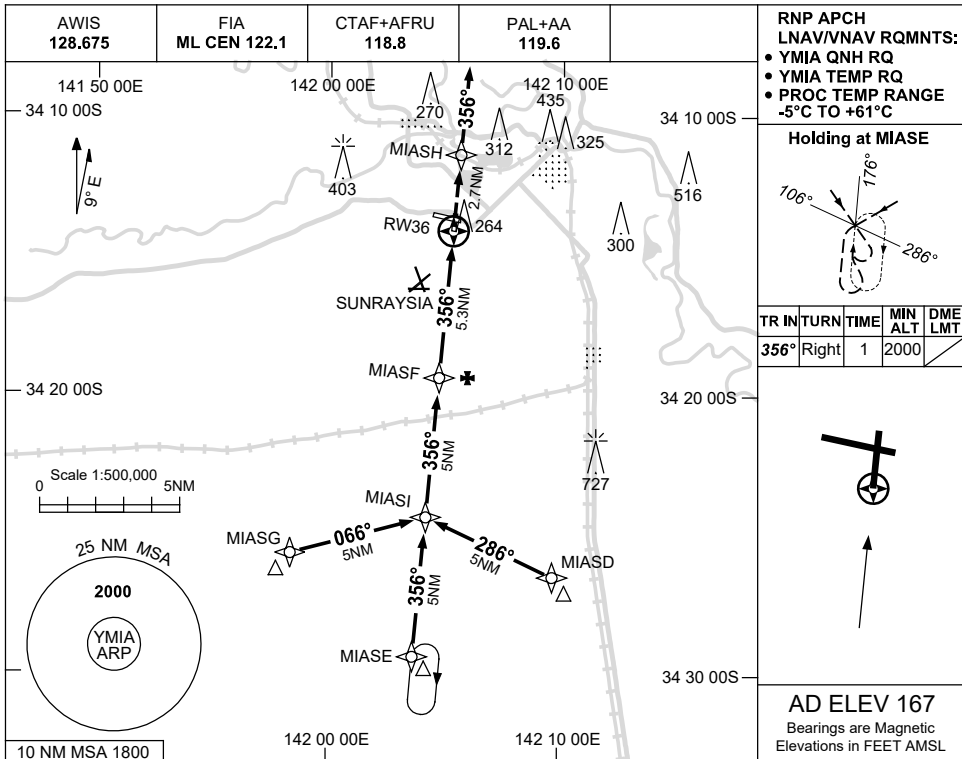


USE QNH

RNP RWY 36
MILDURA, VIC (Y Mia)

15 JUN 2023



NOTES

1. MAX IAS:
INITIAL : 210KT.
2. **CAUTION:**
GLIDER OPS 2.3NM
SSW OF Y Mia AD
CONFLICTS WITH
FINAL APPROACH .

CATEGORY	A	B	C	D
LNAV/VNAV		470 (305-1.7)		NOT APPLICABLE
LNAV		660 (493-2.8)		
CIRCLING	840 (673-2.4)		900 (733-4.0)	980 (813-5.0)
ALTERNATE	(1173-4.4)		(1233-6.0)	(1313-7.0)

Changes: CHART TITLE, PBN SPECIFICATION BOX, Editorial.

MIAQ04-175