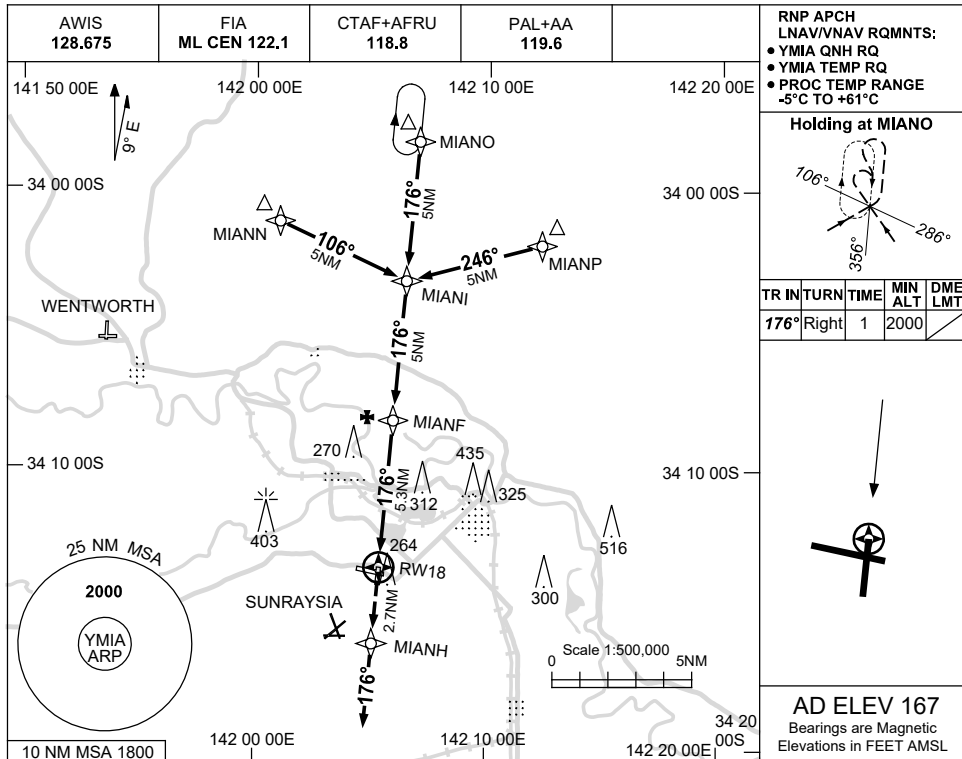


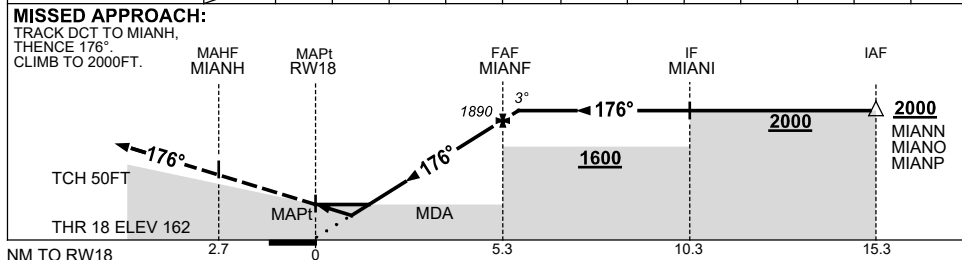
USE QNH

RNP RWY 18  
MILDURA, VIC (YMIA)

15 JUN 2023



NM TO NEXT WPT	RWY18	0.8	1.4	2	3	4	MIANF	0.3				
ALT (3° APCH PATH)		470	660	850	1170	1490	1890	2000				



**NOTES**

CATEGORY	A	B	C	D
LNAV/VNAV	470 (308-1.7)			NOT APPLICABLE
LNAV	660 (493-2.8)			
CIRCLING	840 (673-2.4)		900 (733-4.0)	980 (813-5.0)
ALTERNATE	(1173-4.4)		(1233-6.0)	(1313-7.0)

1. MAX IAS: INITIAL : 210KT.
2. **CAUTION:** GLIDER OPS 2.3NM SSW OF YMIA AD CONFLICTS WITH MISSED APCH AREA.

Changes: CHART TITLE, PBN SPECIFICATION BOX, Editorial.

MIAGN02-175