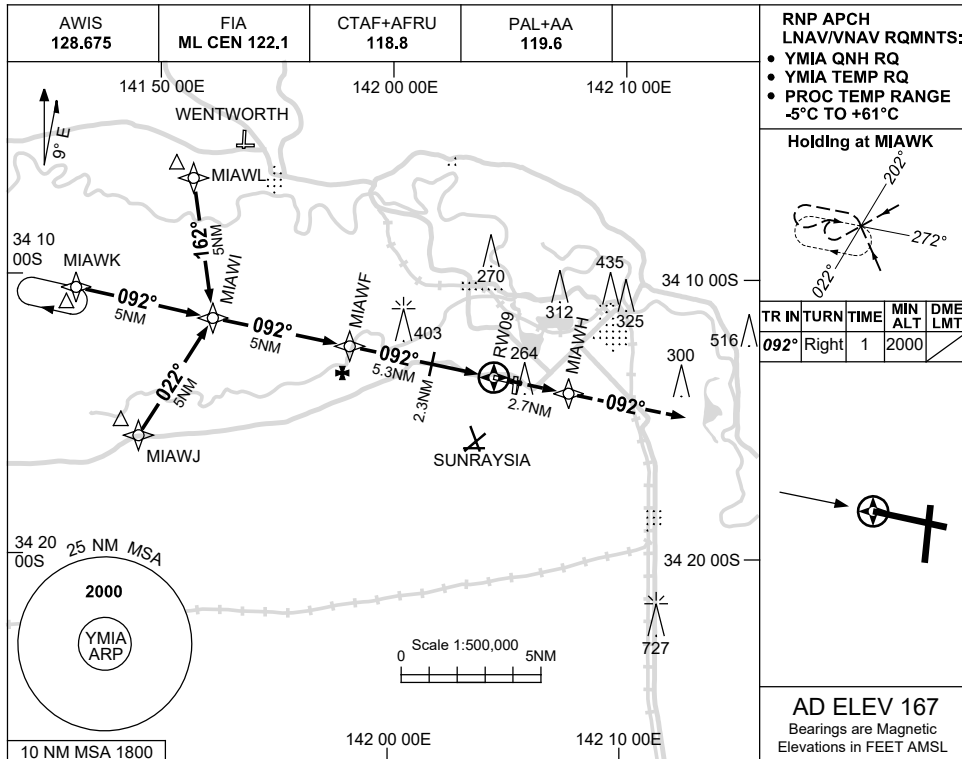


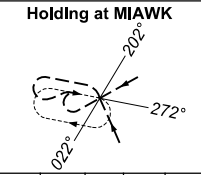
USE QNH

RNP RWY 09
MILDURA, VIC (YMIA)

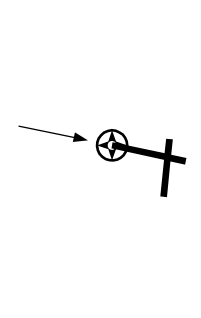
15 JUN 2023



RNP APCH
LNAV/VNAV RQMTS:
• YMIA QNH RQ
• YMIA TEMP RQ
• PROC TEMP RANGE
-5°C TO +61°C

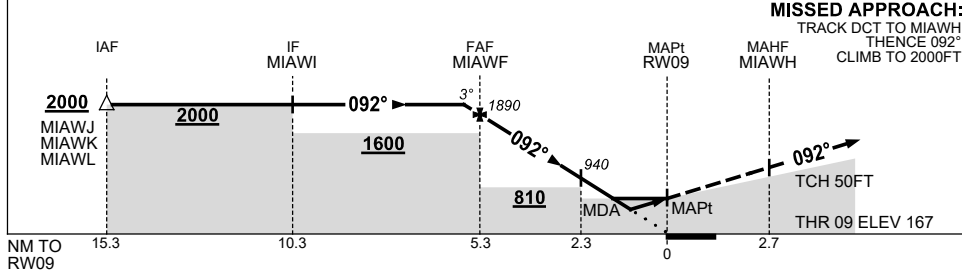


TR	IN	TURN	TIME	MIN ALT	DME LMT
092°	Right		1	2000	



AD ELEV 167
Bearings are Magnetic
Elevations in FEET AMSL

NM TO NEXT WPT	0.3	MIAWF	4	3	2.3	1.4	0.8	RW09
ALT (3° APCH PATH)	2000	1890	1490	1170	940	660	480	



MISSED APPROACH:
TRACK DCT TO MIAWH,
THENCE 092°.
CLIMB TO 2000FT.

CATEGORY	A	B	C	D
LNAV/VNAV		480 (313-1.7)		
LNAV		660 (493-2.8)		
CIRCLING	840 (673-2.4)		900 (733-4.0)	980 (813-5.0)
ALTERNATE	(1173-4.4)		(1233-6.0)	(1313-7.0)

- NOTES
- MAX IAS:
INITIAL : 210KT.
 - CAUTION:
GLIDER OPS 2.3NM
SSW OF YMIA AD.

Changes: CHART TITLE, PBN SPECIFICATION BOX, Editorial. MAGN01-175