

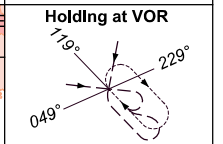
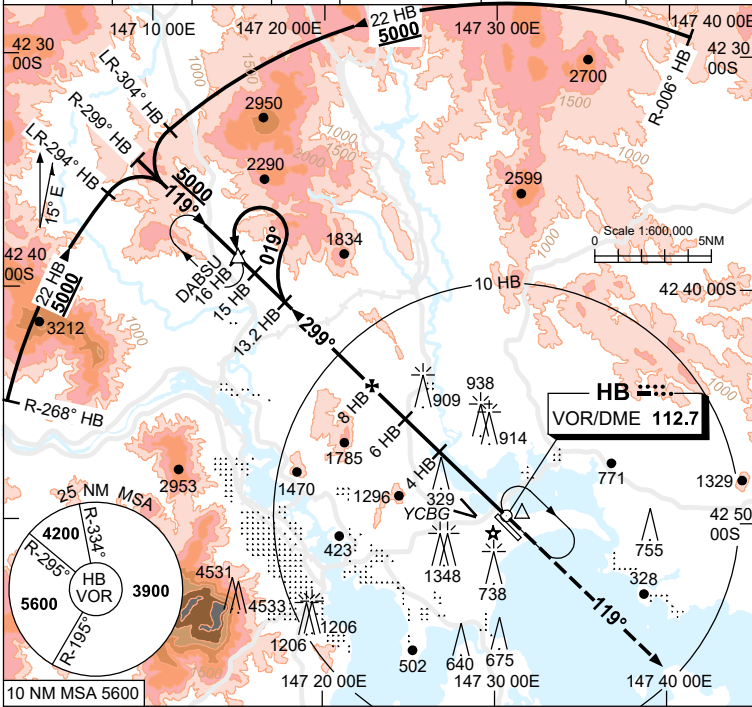
USE QNH

VOR RWY 12  
**HOBBART, TAS (YMHB)**

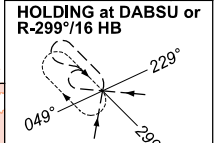
7 SEP 2023

ATIS 112.7 128.45	AWIS 122.375	SMC 121.7	TWR 118.1	HB APP/FIA (AH) ML CEN 125.55	CTAF+AFRU (AH) 118.1	AFRU+PAL (AH) 118.1
----------------------	-----------------	--------------	--------------	----------------------------------	-------------------------	------------------------

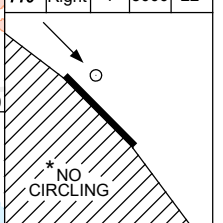
**NAVAID RQ:**  
 • DME



TR	IN	TURN	TIME	MIN ALT	DME LMT
299°	Right	1	4200		

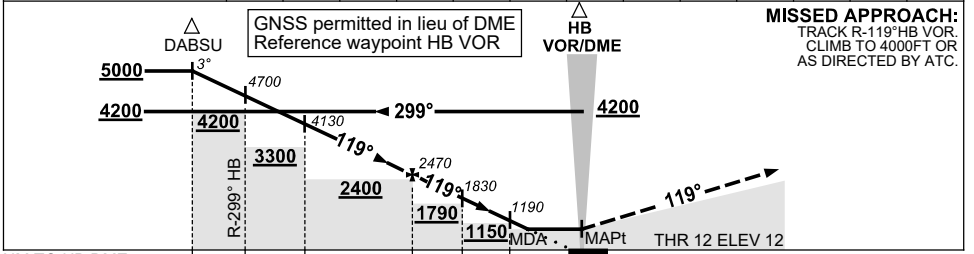


TR	IN	TURN	TIME	MIN ALT	DME LMT
119°	Right	1	5000		22



**AD ELEV 13**  
 Bearings are Magnetic  
 Elevations in FEET AMSL

DIST TO HB DME	16	15	13.2	12	11	10	9	8	7	6	5	4	2.5
ALT (3° APCH PATH)	5000	4700	4130	3740	3420	3110	2790	2470	2150	1830	1510	1190	720



**MISSED APPROACH:**  
 TRACK R-119° HB VOR.  
 CLIMB TO 4000FT OR  
 AS DIRECTED BY ATC.

NM TO HB DME	16	15	13.2	8	6	4	0
ALT	5000	4700	4130	3740	3420	3110	2790
ALT	4200	4200	3300	2400	1790	1150	1150

CATEGORY	A	B	C	D
S-I VOR/DME	720 (707-3.2)			
CIRCLING *	1240 (1227-2.4)	1530 (1517-4.0)	1600 (1587-5.0)	
ALTERNATE	(1727-4.4)	(2017-6.0)	(2087-7.0)	

- NOTES**
- MAX IAS:  
 HOLDING AT VOR:  
 190KT.  
 INITIAL:  
 CAT C&D 210KT.
  - \* NO CIRCLING WEST OF RWY 12/30.
  - COLOUR: SEE SPEC NOTICES.

Changes: YCBG DEPICTION.

MHBV001-176